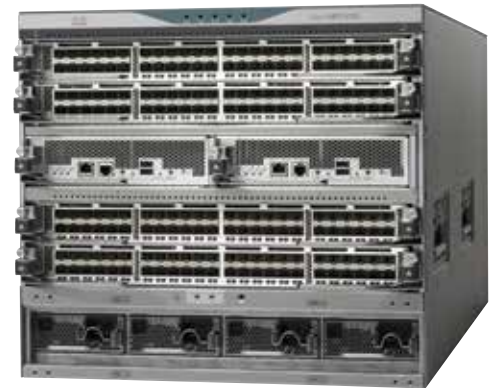




HPE StoreFabric SN8500C Director Switch



The HPE StoreFabric SN8500C 16 Gb FC Director Switch elevates the standard for director-class switches. Providing industry-leading availability, scalability, security, and management, the HPE SN8500C allows businesses to deploy the highest-performance SANs, with the lowest total cost of ownership (TCO) in the industry. Layering a rich set of intelligent features onto a high-performance, protocol-independent switch fabric, the HPE StoreFabric SN8500C Director Switch addresses the stringent requirements of large data center storage environments. It has future-ready performance with up to 24 Tb/s of FC system bandwidth and 384 4/8-Gb/s, 4/8/16-Gb/s, or 10-Gb/s full line rate Fibre

Channel (FC) ports in a single chassis or up to 1152 FC ports in a single rack. It also supports up to 384 10-Gb/s FCoE ports in a single chassis or up to 1152 10-Gb/s FCoE ports in a single rack (with the use of SN8500C 48-port FCoE Modules). It is ready for integration of future high-speed standards, helping to ensure continued investment protection. The HPE SN8500C Director switch is available in two models—the HPE SN8500C with 8 slots (also known as the MDS 9710) and the HPE SN8500C with 4 slots (also known as the MDS 9706), and both share the same operating system and management interface with other HPE StoreFabric C-series data center switches.

Product key selling points

Outstanding SAN performance

- Support for 16 Gb/s FC and 1.5 Tb/s throughput per slot
- Provides 16 Gb/s line-rate, non-blocking, predictable performance across all traffic conditions for every port in the chassis
- Achieve seamless deployment of unified fabrics with high-performance FC connectivity to achieve low TCO

Industry-leading scalability

- Up to 24 Tb/s of FC system bandwidth and 384 4/8-Gb/s, 4/8/16-Gb/s or 10-Gb/s full-line rate FC ports in a single chassis or up to 1152 FC ports in a single rack

- Up to 384 10-Gb/s FCoE ports in a single chassis, up to 1152 10-Gb/s FCoE ports in a single rack (with the use of SN8500C 48-port FCoE Modules)
- Designed for deployment in large-scale storage networks to enable enterprise clouds and business transformation

Outstanding high availability and reliability

- Fully redundant components, including fabric cards, supervisors, and power supplies
- Grid redundancy on power supply and 1+1 redundant supervisors
- Add additional HPE StoreFabric SN8500C Fabric-1 Modules to enable N+1 Fabric redundancy with no loss of performance

- Combines non-disruptive software upgrades, stateful process restart and failover, and full redundancy of all major components

Intelligent network features

- Virtual SAN technology, access control lists (ACLs), intelligent frame processing, and fabric-wide quality of service (QoS)
- VSAN technology, ACLs for hardware-based intelligent frame processing, and fabric-wide QoS enable migration from SAN islands to enterprise-wide storage networks

Technical specifications



HPE StoreFabric SN8500C 8-slot Director Switch



HPE StoreFabric SN8500C 4-slot Director Switch

Port speed	16 Gb/s FC	16 Gb/s FC
Ports	Up to 384 ports	Up to 192 ports
Aggregate switch bandwidth	24 Tb/s Maximum	12 Tb/s Maximum
Protocol support	4/8-Gb/s and 4/8/16-Gb/s, 10-Gb/s FC and 10GbE	4/8-Gb/s and 4/8/16-Gb/s, 10-Gb/s FC and 10GbE
BladeSystem supported	Yes HPE MDS 8Gb Fabric Switch BladeSystem c-Class	Yes HPE MDS 8Gb Fabric Switch BladeSystem c-Class
	VC modules: HPE VC FlexFabric 10Gb/24-Port Module for c-Class BladeSystem HPE Virtual Connect 8Gb 24-Port FC Module for c-Class BladeSystem HPE Virtual Connect 8Gb 20-Port FC Module for c-Class BladeSystem HPE Virtual Connect 4Gb FC Module for c-Class BladeSystem	VC modules: HPE VC FlexFabric 10Gb/24-Port Module for c-Class BladeSystem HPE Virtual Connect 8Gb 24-Port FC Module for c-Class BladeSystem HPE Virtual Connect 8Gb 20-Port FC Module for c-Class BladeSystem HPE Virtual Connect 4Gb FC Module for c-Class BladeSystem
Availability	Equipped with 2 hot swappable redundant 2 SUP-1 modules, 3 hot swappable redundant Fabric-1 modules*, 6 3000W power supplies	Equipped with 2 hot swappable redundant 2 SUP-1 modules, 3 hot swappable redundant Fabric-1 modules*, 4 3000W power supplies
Media types	8 Gbps Fibre Channel SW SFP+ 8 Gbps Fibre Channel LW SFP+ 16 Gbps Fibre Channel SW SFP+ 16 Gbps Fibre Channel LW SFP+ 10 Gbps Fibre Channel SW SFP+ 10 Gbps Fibre Channel LW SFP+ HPE StoreFabric SN8500C FCoE Module supports the following SFPs: 10Gb Ethernet SR SFP+ 10Gb Ethernet LR SFP+	8 Gbps Fibre Channel SW SFP+ 8 Gbps Fibre Channel LW SFP+ 16 Gbps Fibre Channel SW SFP+ 16 Gbps Fibre Channel LW SFP+ 10 Gbps Fibre Channel SW SFP+ 10 Gbps Fibre Channel LW SFP+ HPE StoreFabric SN8500C FCoE Module supports the following SFPs: 10Gb Ethernet SR SFP+ 10Gb Ethernet LR SFP+
Management	Cisco MDS 9000 Family CLI; Cisco Data Center Network Manager; Optional: Integration with CiscoWorks Resource Manager Essentials (RME)	Cisco MDS 9000 Family CLI; Cisco Data Center Network Manager; Optional: Integration with CiscoWorks Resource Manager Essentials (RME)
Upgradeability	Base units include zero port modules. Chassis supports up to eight HPE StoreFabric SN8500C 48-port 16 Gb FC Modules and/or up to eight HPE StoreFabric SN8500C FCoE Modules	Base units include zero port modules. Chassis supports up to four HPE StoreFabric SN8500C 48-port 16 Gb FC Modules and/or up to four HPE StoreFabric SN8500C FCoE Modules
Optional software	HPE StoreFabric SN8500C Data Center Network Manager License (LTU) HPE StoreFabric SN8500C Enterprise Package License HPE StoreFabric SN8500C Mainframe License (SN8500C 8-slot only)	HPE StoreFabric SN8500C Data Center Network Manager LTU HPE StoreFabric SN8500C Enterprise Package License
Required software	NX-OS 6.2(1) minimum; HPE StoreFabric FCoE Module requires NX-OS 6.2(7) or later	NX-OS 6.2(9) minimum; HPE StoreFabric FCoE Module requires NX-OS 6.2(7) or later
Form factor	14U	9U
Warranty (parts/labor/onsite)	3/3/3	3/3/3

*The 3 Fabric-1 modules shipped by default are required to deliver full line rate and bandwidth for the switch. Users can add an additional Fabric-1 module to provide N+1 fabric redundancy.

Customize your IT lifecycle management, from acquisition of new IT, management of existing assets, and removal of unneeded equipment.

hp.com/go/hpfinancialservices

Get the support you need

Choose from a rich portfolio of services to make the most of HPE storage, so you can move with confidence to take full advantage of one of the broadest, most advanced portfolios in the industry.

Expert HPE storage consultants and service professionals

sit down with you and your team to map your storage needs. Not only can we help you accelerate implementation and reduce deployment risk, but we can also help you realize the full value of your storage purchases as you transform storage for the New Style of IT.

Advise, transform, and integrate

Navigate through the complexities of storage, backup, archive, disaster recovery, and Big Data with advisory, transformation, and integration consulting.

Deploy and implement

Access expertise to support deployment, operations, relocation, sanitization, and disposal, plus improvement-focused education.

Operate and support

Find the level of personalized, proactive, and simplified support right for your business

Note

Specific service availability varies by product

Foundation Care

System-level IT hardware and software support delivers flexible coverage window and response time for more choice and simplicity.

Proactive Care

Combined reactive and proactive services provide easy-to-purchase, cost-efficient system-level support coupled with personalized expert advice and products connected to HPE to help prevent problems and reduce downtime.

HPE Proactive Care Advanced builds and incorporates on Proactive Care and also gives customers personalized technical and operational advice from an Assigned, local Account Support Manager for personalized technical collaboration, flexible access to specialist skills to help optimize business critical IT, and Enhanced Critical Incident Management to help so the business is not affected if there is a system or device outage.

Datacenter Care

Get the support you need to deploy, operate, and evolve your data center environment to be hybrid-cloud ready with single-point-of-accountability for HPE and others' product.

Get connected and get back to business—HPE Storage Technology Services provide the path to get your HPE Storage solutions and your business connected to HPE. Once connected, our experts are able to scan your system and run health checks, then use that data to create personalized reports and recommendations for actions to take to prevent problems and downtime.

To learn more, visit: hpe.com/services/storage

Learn more at
hp.com/go/SN8500C



Sign up for updates