

Overview

Introduction

HP Data Protector software for PCs is an expansion of HP's high performance backup and recovery software that is designed specifically for notebooks and desktops. This solution ensures the availability of business data on PCs without compromising productivity or mobility. It provides the ability to enforce central protection policies and optimize bandwidth and storage capacity for all notebooks and desktops in the organization.

As an important component of HP's Data Protector product portfolio, HP Data Protector software for PCs is an integral part of a complete backup and recovery strategy. Appropriate for companies in any industry, it is the ideal solution to increase productivity of your employees and avoid the business risks and costs associated with PC data loss.

Why use it?

Today's employees have an increased need for mobility. While working remotely brings numerous benefits for businesses and individual workers, it can be problematic too, since the locally updated files become the only copies in the company, representing a huge amount of data outside the corporate network. This data is often seen as non-critical and it's assumed that users can easily recreate it. However, it creates major weak spots in organization's security defenses and is extremely vulnerable due to the following risks, which may have a significant impact on both IT and user productivity:

- End-user errors resulting in a data loss
- PC theft or loss
- Hardware failures

As the number of remote workers is constantly growing (reaching 25% in some organizations), it is essential to identify a consistent, secure, organization-wide approach to PC backup. PC protection must work everywhere the user needs it to, whether connected to the internet or not. It has to protect data from the minute it's created through its lifecycle. And it must occur in the background without impacting the daily work of employees. A comprehensive solution, such as HP Data Protector for PCs, protects data regardless of whether the user is on- or offline, creates a transparent user experience and unburdens IT staff from the task of PC data recovery.

Continuous & immediate protection

Data Protector for PCs combines a local repository with a network data vault guaranteeing **continuous** protection for PC users. Every change made in an offline environment is saved in the local repository, which eliminates the need to be connected to the corporate network in order to perform data recovery. This capability of recovering from a local cache transparently is important because it provides complete user mobility.

Data Protector for PCs doesn't utilize scheduled backups, since all changes performed by the user are captured and every saved version is **immediately** protected and recoverable. In addition, Data Protector for PCs allows end users to recover lost or accidentally deleted files without ever calling the help desk. For example, if an employee saved a new version of a file with "Save" rather than "Save As", overwriting some previous edits by accident, the previous version can be easily restored. With a conventional scheduled backup, the overwritten version would be lost. Another benefit to this transparent approach is that users are prevented from canceling or stopping the scheduled backup and being at risk of having no protection at all.

Overview

Benefits

Improved employee productivity

Over time, failure of hard disks and loss of individual files spread over all employees' computers can mean a huge loss of productivity. This translates into lost revenue.

Data Protector for PCs eliminates scenarios that can cause employee data loss. If a single file or directory is removed or destroyed, the user can restore it immediately without the help of central IT. Since the data is locally cached, there is no need to get online to perform a restore. In the case of a total loss of data - either a disk crash, or lost or stolen PCs - users can simply get a new PC or disk from their IT department and restore the business-critical data back to their PCs from the central copy.

Efficiency and security

In addition to local caching, company data must still be backed up to a central location for complete protection. Often this is performed over an internet connection and through a VPN tunnel. In order to optimize these transfers, only block-level changes are sent to the network data vault, minimizing bandwidth impact. Before the data is transferred, it is compressed to optimize bandwidth even further and also encrypted to ensure that security standards are met.

Storing data in this optimized fashion minimizes capacity requirements. For example, 4 GB of user data would typically require only 1 GB of storage capacity on the central data vault.

Transparent end-user protection

Users are famous for opting out of scheduled backups, which often impact the PC performance. And most solutions only protect data when the user is connected to the Internet or corporate network. Many organizations rely on users to back up PCs themselves, while some workers use unreliable - and insecure - backup methods like emailing data to a non-work account. All this puts them at risk because their data is no longer protected.

Data Protector for PCs is completely transparent to the end user. Block-level analysis of the data occurs in the background while users continue to access their PCs normally. The last phase of protection (transfer to the central data vault) also happens asynchronously, without impacting network availability and bandwidth.

When recovering data, Data Protector for PCs closely integrates with the common tools used for managing files, such as Windows Explorer, allowing intuitive recovery of lost and accidentally deleted files.

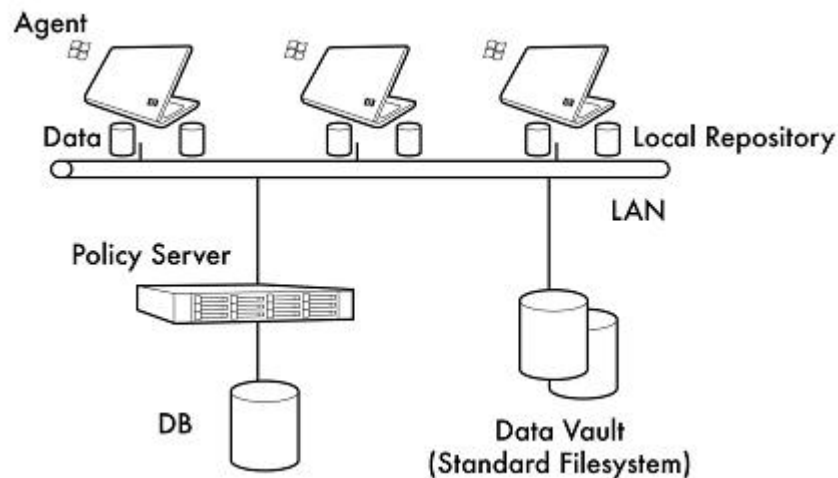
Reduced impact on IT staff

Data Protector for PCs streamlines and simplifies the PC protection process by allowing IT staff to centrally configure multiple policies for different data types. IT staff can quickly and easily define which files are to be protected, how long they should be retained, and can even allow end users to configure certain rights to suit their individual needs. Backup status for each laptop can also be centrally monitored. Centralized protection of PC data saves IT staff endless hours - and hundreds of thousands of dollars. Including PC data in the backup process is a must these days. Remote PCs can leave organizations far too vulnerable to threats and data loss. Add those assets to your data protection plan easily - without adding work for IT teams or users - and gain better control and peace of mind.

Overview

How it works

The product has three major components:



Agent

The agent is the active part of the solution and is installed on the employee's PC. It provides continuous protection of office documents, as well as open files such as mail archives (PST). It captures the data locally and then transfers the data to a central data vault upon connection to the corporate network. The local version allows recovery of files and directories even while offline.

Policy server

The policy server is the central administration server for agents and data vaults. It is used to set central protection policies for agents and to manage their licenses and status. A quota can be set for each agent, and agents can also be assigned to different data vaults. Typically there are multiple agents and data vaults for each policy server.

Data vault

The data vault is the central data container for agents. There are two types of data vaults - a web data vault and a Windows file share data vault. The data is stored in an encrypted, compressed and de-duplicated fashion in order to use the space optimally. A cleanup agent frequently purges old versions from the data vault.

Overview

Unique values

Simple

The three components of HP Data Protector for PCs make it easy for central IT to administer. Data vaults utilize standard Windows file systems and can leverage existing investments. Agents are intuitive for end users through the Windows Explorer plug-in that allows data restore by simply right-clicking a file or directory in Windows Explorer and selecting from the pop-up menu. Licensing is straightforward and simple: one license for every protected PC.

Inexpensive

HP Data Protector for PCs is a cost-effective and inexpensive solution. By utilizing the resources for backup in the most efficient way, it saves not only on software licensing cost but also on the total solution cost, including hardware.

Non-intrusive

A key requirement for an end-user backup solution is that it doesn't impact users' work - otherwise, they may opt out of the backup to continue with the main task. HP Data Protector for PCs offers a protection scheme for all files including open files, such as Outlook PST files, allowing users to continue using them while they are being continuously protected in the background. There is no scheduled "backup job" that could lock up the user's PC.

Unique RPO

With HP Data Protector for PCs, users' data is available wherever and whenever they need it. With local caches of changed data and continuous, transparent backup operations, they are protected anytime they work on their computers.

Hardware support and software pre-requisites

Platform support

- Data Protector for PCs is a Microsoft Windows-based product.
 - The agent is supported on all available Windows desktop operating systems (Windows XP, Window Vista and Windows 7).
 - The policy server supports Windows 2003, 2008 and 2008 R2.
 - The data vault supports Windows 2003, 2008 and 2008 R2.
 - For detailed information on supported platforms, see the HP Data Protector for PCs support matrix at <http://www.hp.com/go/dataprotector>
-

Software pre-requisites

Policy server

The policy server must have the following installed:

- Internet Information Services 6.0, 7.0, 7.5 or later with support for ASP.NET applications
- Microsoft ASP.NET 2.0

You also need the following installed on the policy server. If these components are not installed, the installation wizard will give you the opportunity to install them from the CD-ROM.

- Microsoft Installer 3.1 or later (required for .NET Framework 2.0 SP1).
- Microsoft .NET Framework 2.0 SP1 or later. The wizard will install version 2.0 SP1.
- Microsoft SQL Express - max 5000 users

NOTE: If you need to support more than 5,000 agents in your environment, you can either have additional policy servers or replace MS SQL Express with a full version of Microsoft SQL Server. In this way, the policy server can easily scale up to 50,000 agents.

Data vault

Minimum hardware requirements:

- 1 x 3 GHz dual-core processor
 - 4 GB RAM
 - 14 TB disk capacity

A data vault meeting these requirements can support a user population of up to 3,500 agents if the average data characteristics are approximately as follows:

- Average number of protected files: 5000
- Average total size of protected files on local disk: 10 GB
- Average total size on the data vault (compressed): 4 GB

Agent

For sizing recommendations for data vaults that need to host data of more than 3,500 agents, please see the Data Protector for PCs Installation and Administration Guide.

On agents, data is locally cached in a local version store (the local repository). To ensure full functionality, the following free space should be available:

- During the initial backup of the system, a minimum of the sum of all open protected files (mostly *.pst files) must be available as free space on the PC.
 - During normal protection, 2% of the protected data must be available as free space on the hard drive of the PC.
-

Hardware support and software pre-requisites

Installation

The agent and policy server are installed locally on the system. The policy server is typically installed directly from the CD while the agent is installed via an MSI package either from a central share or integrated into a PC management suite. The agent can be packaged with pre-defined policies, so it only needs a license after installation to start working.

Licenses, services and warranties

Distribution MediaCD

Documentation

Data Protector for PCs manuals are available in electronic PDF format. The PDF files are automatically installed during the Data Protector for PCs software setup procedure. Once installed, the manuals and support matrix reside in the <installation directory>\Docs directory on the policy server. The Agent Release Notes are available in the <installation directory> of the agent. You can also find the manuals at <http://h20230.www2.hp.com/selfsolve/manuals>.

The latest version of the Acrobat Reader software is available at <http://www.adobe.com>.

The HP Data Protector for PCs documentation set consists of the following:

HP Data Protector for PCs Installation and Administration Guide

This guide describes how to install the software, taking into account the operating system and architecture of your environment. This manual also gives details on how to upgrade and configure Data Protector for PCs, as well as how to obtain support for your environment.

HP Data Protector for PCs Troubleshooting Guide

This guide describes how to troubleshoot problems you may encounter when using Data Protector for PCs.

HP Data Protector for PCs Policy Server Release Notes

This document provides an overview of the new functionality and contains a list of software and hardware requirements for the policy server. It also covers basic installation and gives information on enhancements and fixes, as well as known problems and workarounds. For supported configurations, see the support matrix available at <http://www.hp.com/go/dataprotector>.

HP Data Protector for PCs Agent Release Notes

This document provides an overview of the new functionality and contains a list of software and hardware requirements for the agent. It also covers basic installation and gives information on enhancements and fixes, as well as known problems and workarounds.

HP Data Protector for PCs Data Vault Server Release Notes

This document provides an overview of the new functionality and contains a list of software and hardware requirements for the data vault server. It also covers basic installation and gives information on enhancements and fixes, as well as known problems and workarounds.

Software licensing

The Data Protector for PCs product structure is based on agents.

A license is required for each protected agent regardless of the amount of protected data. A license is required for agents running on physical or virtual machines.

Software warranty

HP warrants only that the software media will be free of physical defects for a period of ninety (90) days from delivery. For more information about HP Global Limited Warranty and Technical Support, visit <http://h40059.www4.hp.com/warranty/support/tc.php>

Licenses, services and warranties

HP Foundation Care 24x7 Service HP Foundation Care 24x7 connects you to HP 24 hours a day, seven days a week for assistance on resolving issues - hardware onsite response within four hours and software call back within two hours after opening your case. Make HP your first call for hardware or software questions; Collaborative Support is included in all Foundation Care Services for this product and provides troubleshooting assistance on software such as Microsoft Server, Red Hat Linux, VMware and more. Three years' coverage recommended with HP Care Pack Service.

HP Foundation Care Next Business Day Service HP Foundation Care Next Business Day connects you to HP during business hours for assistance on resolving issues - features next business day hardware onsite response and software call back within two hours after opening your case. Make HP your first call for hardware or software questions; Collaborative Support is included in all Foundation Care Services for this product and provides troubleshooting assistance on software such as Microsoft Server, Red Hat Linux, VMware and more. Three years' coverage recommended with HP Care Pack Service.

HP Services: scalable, flexible and reliable

The Quickstart Basic for Data Protector for PCs provides customers with improved speed and confidence in IT infrastructure deployment, and prepares their IT staff and processes for operational success. These services are a suite of scalable, clearly-defined service engagements that provide product and solution deployment consistent with HP specifications. Solution Services help ensure a successful implementation, improve the productivity of your technical staff and allow your IT resources to stay focused on their core tasks and business priorities.

For more information contact your HP sales representative or authorized business partner.

HP Software Education Services

HP Software Education Services provide a comprehensive curriculum for all HP software products including legacy Mercury, SPI, OpenView, Opsware and Tower products. The curriculum delivers invaluable tips and tricks that can help customers maximize business outcomes using different methods of delivery at multiple locations across the world. It offers flexible learning options, including instructor-led training in our classrooms or onsite at your facility, web-based training, end-user training, as well as customized training courses and professional certification programs.

HP Software Education Services have a deep and extensive knowledge of HP software, which enables it to deliver the best training experience possible for you and your staff. Maximize the value of your HP software by enabling your staff with the tools they need to fully deploy your investment today.

To learn more about the extensive HP Software training offerings, including course detail, please visit: www.hp.com/learn/hpsw

HP Financial Services

HP Financial Services provide innovative financing and financial asset management programs to help customers cost-effectively acquire, manage and ultimately retire their HP solutions. For more information on these services, please contact your HP sales representative or visit www.hp.com/go/hpfinancialservices

QuickSpecs

HP Data Protector software for PCs

Configuration Information

Product Name	Description	Part Number	Part Number E-Delivery
HP Data Protector for PCs License-to-Use for Agents	<p>License</p> <p>25 agents</p> <p>100 Agents</p> <p>1000 Agents</p> <p>A license is required for each computer that has the agent software installed and is protected by the software. A License-to-Use (LTU) is bound to the IP address of a policy server and cannot be shared with other policy servers.</p> <ul style="list-style-type: none"> For a replacement PC or laptop, the license must be transferred to the new machine. If both machines need to be protected simultaneously, two licenses are required. Restores of previously protected file versions are possible without a license. 	<p>TA037AA</p> <p>TA032AA</p> <p>TA033AA</p>	<p>TA037AAE</p> <p>TA032AAE</p> <p>TA033AAE</p>
Media set for HP Data Protector for PCs	<p>Media Only (all languages)</p> <p>Media for the installation of the policy server and agents. It includes all supported languages:</p> <ul style="list-style-type: none"> English German Japanese French Spanish Italian Simplified Chinese Traditional Chinese Korean Russian Brazilian Portuguese <p>Manuals included on the media are:</p> <ul style="list-style-type: none"> Installation and Administration Guide Troubleshooting Guide Policy Server Release Notes Agent Release Notes Data Vault Server Release Notes Open Source and Third-Party License Agreements Document 	TA031CA	TA031CAE
Data Protector starter pack Windows and 100 agents bundle	Includes Data Protector for PCs licenses for 100 agents.	TA036AA	TA036AAE

Configuration Information

© Copyright 2014 Hewlett-Packard Development Company, L.P.

The information contained herein is subject to change without notice.

Microsoft®, Windows®, Windows® XP, and Windows Vista® are U.S. registered trademarks of Microsoft Corporation.

The only warranties for HP products and services are set forth in the express warranty statements accompanying such products and services. Nothing herein should be construed as constituting an additional warranty. HP shall not be liable for technical or editorial errors or omissions contained herein.