



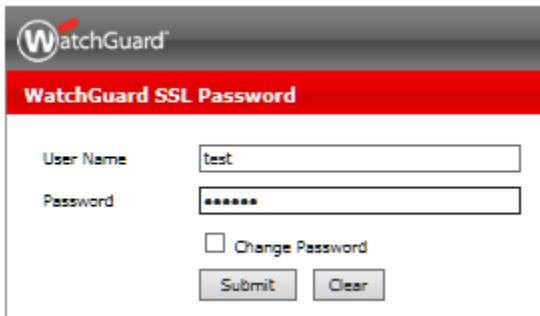
HPE Education Services

Remote Lab Testing Directions CDI

Test your HPE Virtual lab access

Important. Test lab access from the building and room that you will be using for the training. It is very possible this will work from one location and not another based on corporate firewall policies.

- Open a Web browser and enter the following URL: <https://labs.computerdata.com>. If you see “There is a problem with this website’s Security Certificate”, error, click on “Continue to this website (not recommended)” link. At the login screen, enter username/password – test/cdilab.



The screenshot shows a WatchGuard SSL Password login form. At the top left is the WatchGuard logo. Below it is a red header bar with the text "WatchGuard SSL Password". The form contains two input fields: "User Name" with the value "test" and "Password" with masked characters "*****". Below the password field is a checkbox labeled "Change Password". At the bottom are two buttons: "Submit" and "Clear".

System requirements

Each participant will need a Microsoft Windows based PC that has Internet Explorer with ActiveX controls and VBScript enabled to access the HP Virtual Environment. You will also need to have Administrative permission on the PC to allow the download of additional software if needed for your course/lab.

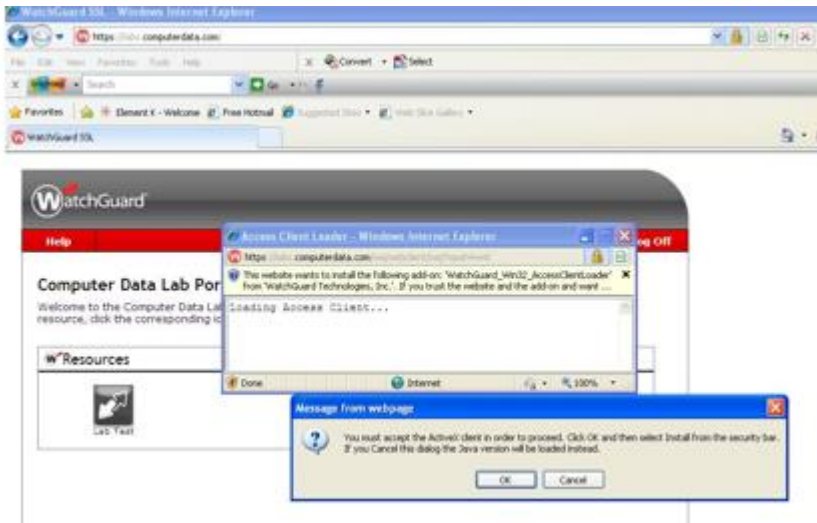
Technical support

Should you have technical difficulties please contact:
Brian Campbell
bcampbell@computerdata.com
1.248.544.9900, ext 263

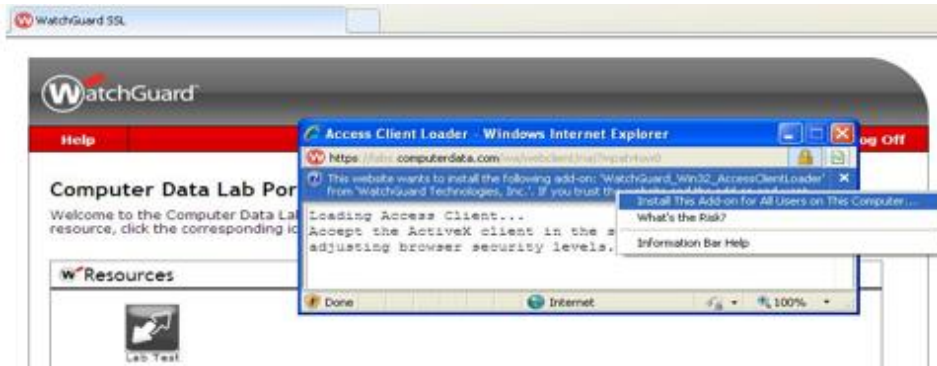
- After a successful login, the Computer Data Lab Portal will be displayed. Click the GREY “Lab Test” icon in the portal.



- A prompt will request to install the ActiveX add-on 'Watchguard_rd_WinXX_AccessClientLoader'.



- Install the Add-On for all users of the computer.



- Select "install" when prompted.



- After successful client installation, a red 'W' will appear in the system tray.



- Test the lab connection with a telnet client.
- Download the Putty client (putty.exe) from www.computerdata.com/download and save to your desktop.
- Open the Putty client and enter 192.168.100.100 as the "Hostname", select "Telnet" as the connection type and press Enter or Open.
- A login screen will be displayed, which indicates a successful test. Close the Putty window.

