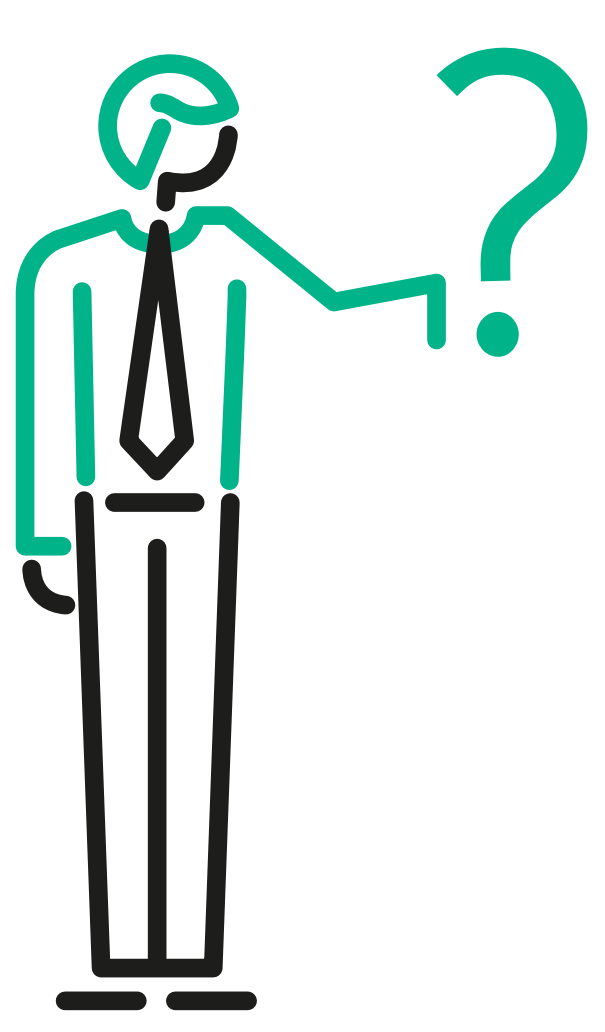
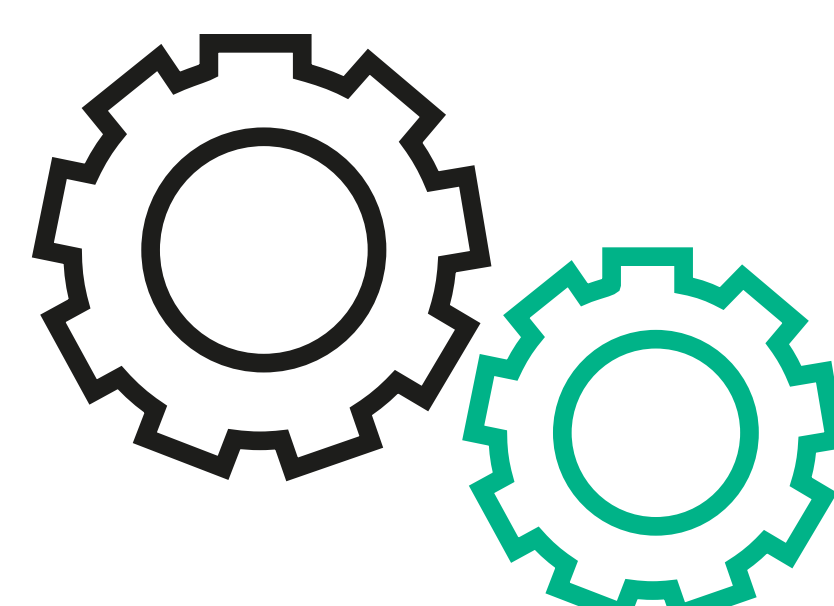


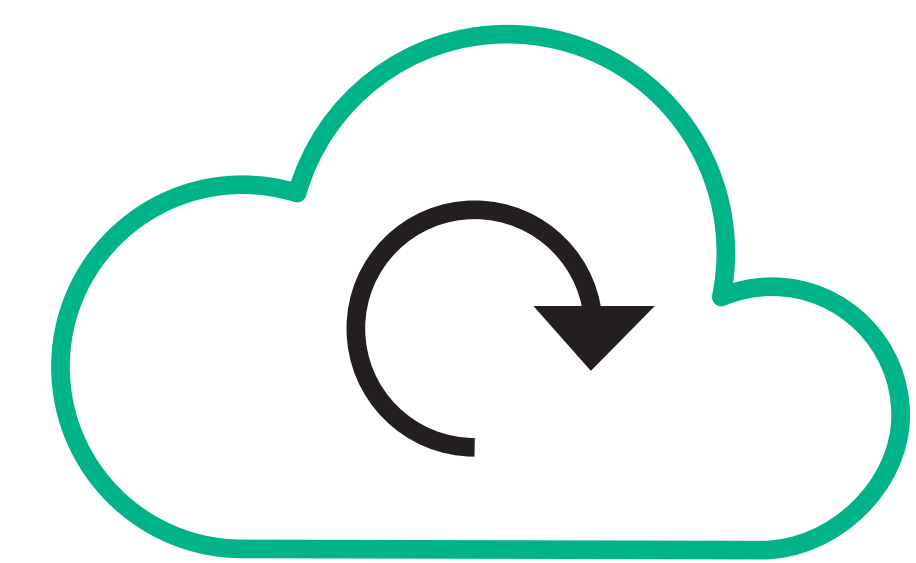
How to Use a Hyperconverged Infrastructure



VDI

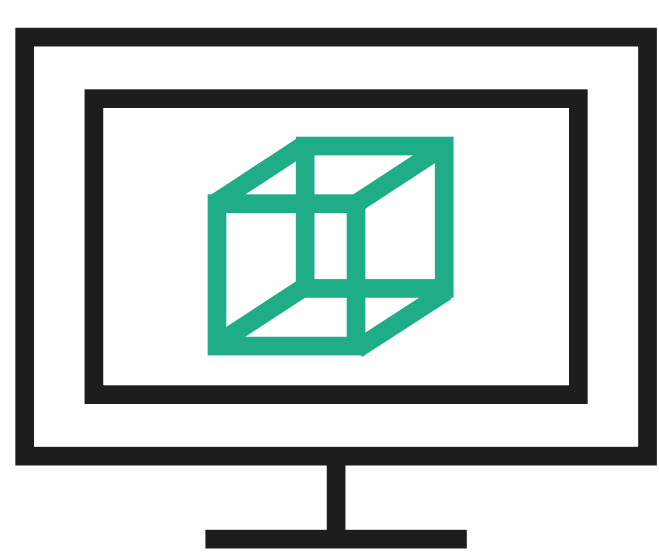


ROBO deployments



Cloud computing

What People Do with VDI



Full graphics acceleration

11%**

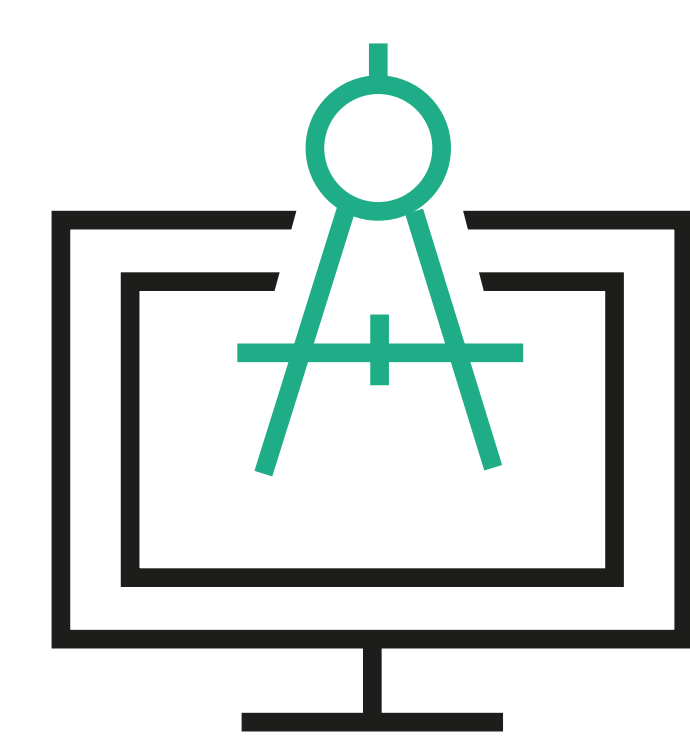
those who need access to dedicated graphics resources like CAD applications



Single applications

46%**

call centers that require access to 1 or 2 applications at a time



General desktops

70%**

companies that need to access on-demand applications (e.g. Microsoft Office)



3%
entire desktop virtualized**



48%
have no virtualized desktop environment**



49%
virtualized some desktop environments**



Due to technical and licensing challenges, more large companies have adopted VDI than small and mid-sized companies.

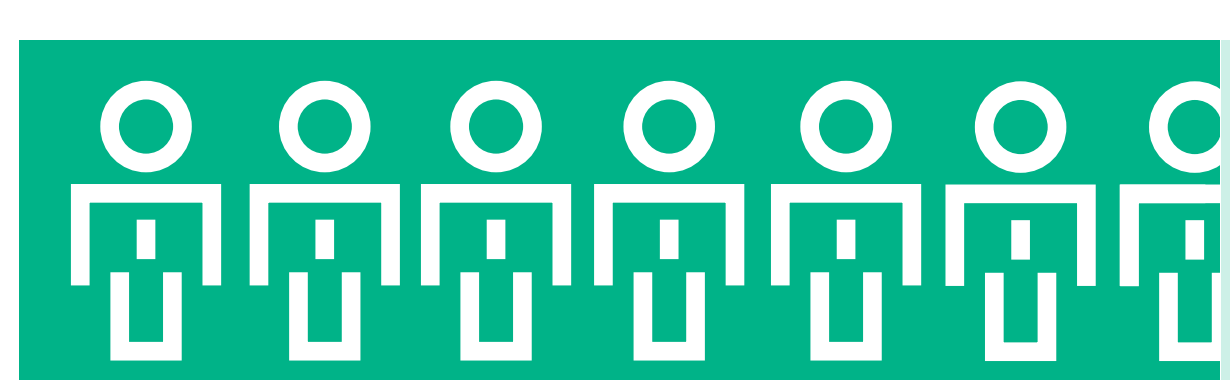
Why ROBOs Should Use Hyperconverged Systems

Hyperconvergence Solves Current ROBO Challenges

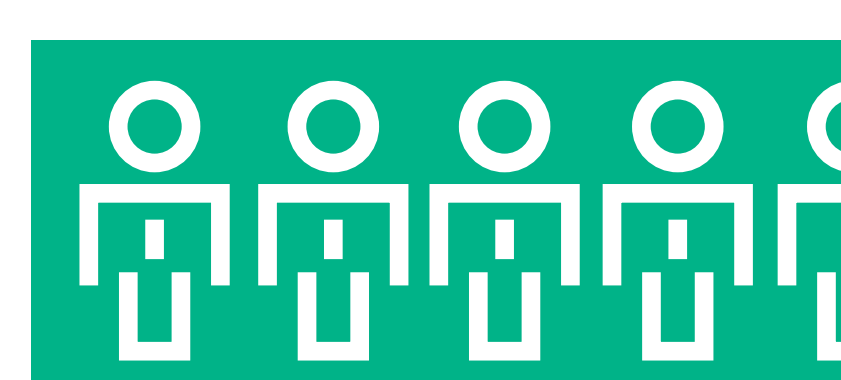
- Data protection
- Performance
- Management



Hyperconverged infrastructure simplifies ROBO deployments.



67% support ROBO environments**

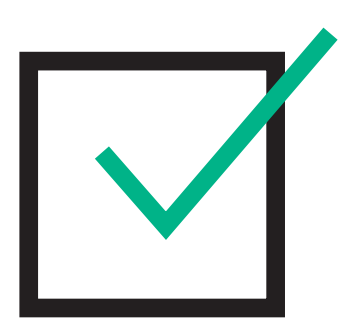


44% operate their ROBO environments using traditional equipment/services**

How Hyperconvergence Enables Private Cloud Users



Private cloud = Hyperconverged Infrastructure



Allows datacenter admins to focus on building automation and orchestration tools



Hyperconverged infrastructure assists in fast-tracking private cloud deployments.

43% more satisfied with private cloud on hyperconverged than on traditional systems**

**Surveyed individuals¹



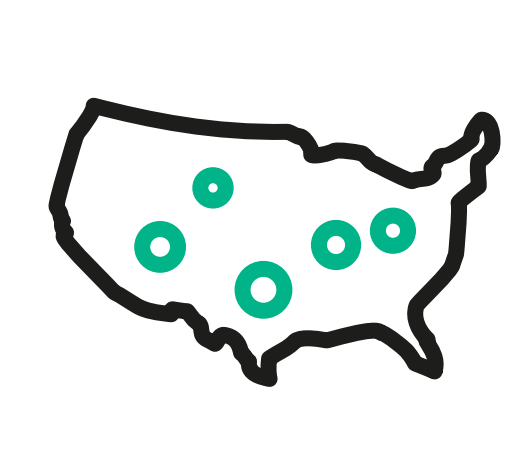
543
IT professionals



22
verticals



17
countries



49
US States

Find more details and strategy at hpe.com/info/hyperconverged
Learn about use cases at <http://hpe.to/6004Btlg>