



Configuring energy saving scheduling on HP Comware-based switches

Table of contents

Save time and energy with Comware switch series	2
Topology	2
Comware Access Switch configuration.....	3
Additional links	4

Save time and energy with Comware switch series

HP Networking has always paid special attention on energy consumed on network infrastructure. For this reason, HP Networking implements different standard protocols such as Energy Efficient Ethernet (EEE), and other features and functionality to save energy automatically.

For some network campus infrastructure, where PoE was used to power the devices, it would be beneficial to disable the PoE on the interfaces where it is connected to the powered devices especially when it is not in use.

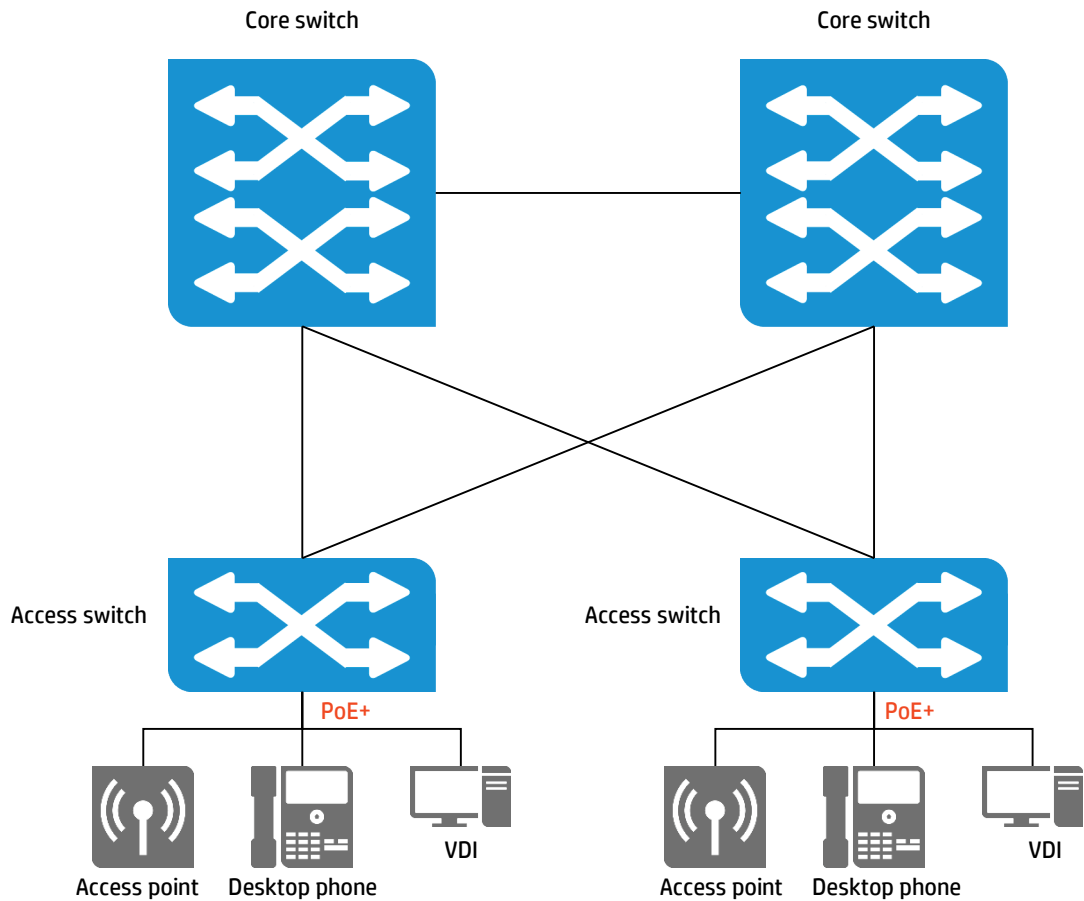
There are lots of device that use the PoE: Wi-Fi Access Point, VoIP phones, VDI, set-top-box, and the list will probably grow in the future (for example, notebook or laptop).

Just as you would turn off the lights in your house when you leave, at night, or over the weekend, consider a bank of PoE devices that are only used during business hours.

HP Networking platforms have had configurable power saving controls that can disable PoE+ power to different loads based on time.

Topology

Figure 1. Sample topology network campus infrastructure



Comware Access Switch configuration

The powered devices (PDs) are typically connected to an Access Switch that provides PoE. Below is an example of the configuration on Access Switch to turn off and turn on the PoE.

Example config:

#Configure the PoE profile on the switch and declare the command to execute

```
<HP> system-view
[HP]poe-profile EnergySaving
[HP-poe-profile-EnergySaving-1]poe enable
```

#Create a job to recall the PoE profile command

```
[HP] job EnergySaving
```

#Choose in which view the switch executes the commands

```
[HP-job-energysaving] view system
```

#The command below recalls the PoE profile. Apply the command to enable the PoE on a range of interfaces. In this way all PDs (Wi-Fi AP, VoIP phones, VDI, etc.) attached to the interface range will switch on

```
[HP-job-energysaving] time 1 repeating at 06:00 command apply poe-profile name
EnergySaving GigabitEthernet 1/1/1 to GigabitEthernet 1/1/48
```

#The command below recalls the PoE profile. Apply the command to disable the PoE on a range of interfaces. In this case all PDs (Wi-Fi AP, VoIP phones, VDI, etc.) attached to the interface range will switch off

```
[HP-job-energysaving] time 2 repeating at 00:00 command undo apply poe-profile
name EnergySaving GigabitEthernet 1/1/1 to GigabitEthernet 1/1/48
```

#Verify the PoE status on interfaces

```
[HP]display poe interface
```

#Command useful to verify the clock format

```
[HP] display clock
```

Note:

To disable/enable the PoE on interface during the weekend, it's possible to configure others "time x repeating" under the job commands based on weekend days.

Additional links

More information for the Campus switch and Branch portfolio can be found at:

hp.com/us/en/networking/switches/index.html

Manuals for HP Networking products can be found at:

<http://h17007.www1.hp.com/us/en/networking/library/index.aspx#>

Learn more at

hp.com/networking

Sign up for updates

hp.com/go/getupdated



Share with colleagues



Rate this document

