

# Business productivity: It's as easy as 1-2-3

Small and midsize businesses face big barriers to productivity



## Ineffective legacy systems

- Poor application performance
- Slow provisioning
- High operating costs



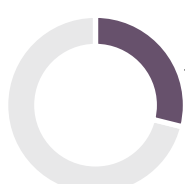
#1

Increasing productivity is the most widely cited business priority for global SMBs<sup>1</sup>



## Ineffective collaboration

- Too many disconnected tools
- Poor user experience
- Outdated systems



29%

of SMBs consider UC as the business application that is most important in helping your organization increase productivity.<sup>2</sup>



## Disjointed communication

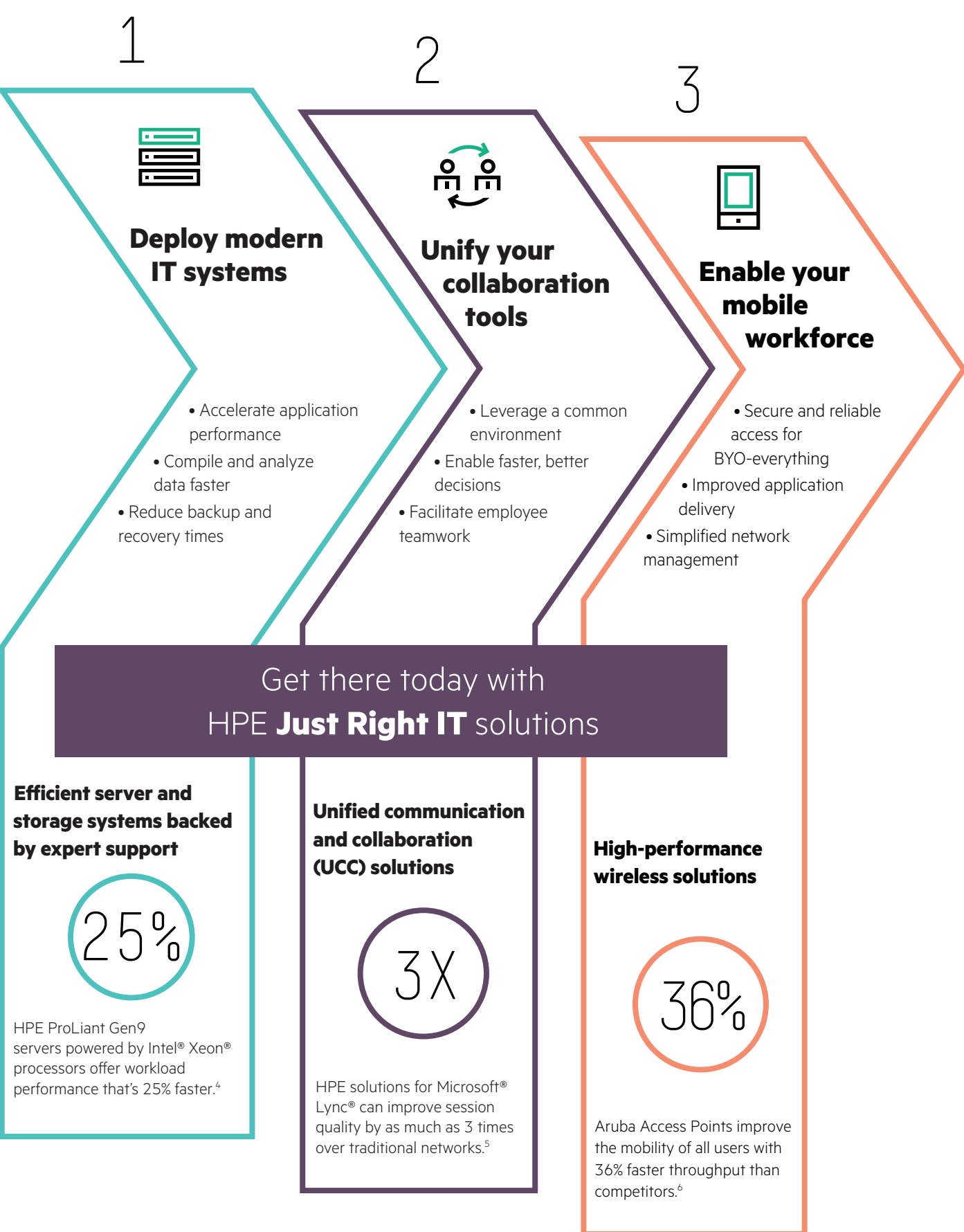
- Sluggish wireless performance
- Multiple management tools
- Security risks on mobile devices



52%

of total email opens occurred on a mobile phone or tablet in Q2 2015<sup>3</sup>

Follow these three steps to higher productivity



**Here's the bottom line: With Hewlett Packard Enterprise, you have a trusted partner with flexible, right-sized solutions tailored to your needs.**

Productivity doesn't happen by chance. It happens by design. Let's get started.

[hpe.com/info/justrightit-prod](http://hpe.com/info/justrightit-prod)



<sup>1,2</sup> ESG 2015 SMB Business Outcome Survey, August 2015.  
<sup>3</sup> Experian Marketing Services: Quarterly benchmark report Q2 2015.  
<sup>4</sup> HPE ProLiant Gen9 Servers deliver up to 25% faster performance (due to Intel® E5-2600 v4 chip); TPC and TPC-H are trademarks of the Transaction Processing Performance Council. TPC-H results show the HPE ProLiant DL380 Gen9 Server with a non-clustered result of 678,492 QphH and 1000 GB and \$0.64/USD and 1000 GB with system availability as of 7-13-2016. See tpc.org/3320. The TPC results that comparisons of TPC-H results published with different scale factors are misleading and discourages such comparisons. Results as of March 31, 2016, see tpc.org for more information. Performance gains may vary.  
<sup>5</sup> HPE Internal Calculation based on Oversubscription Mean Option Score (MOS) values for calls with DSCP vs. calls without DSCP, March 2014.  
<sup>6</sup> Based on Aruba Instant 225, Internal Aruba Upstream and downstream performance testing as well as single client and multiple client tests for high-density environments.

© Copyright 2015–2016 Hewlett Packard Enterprise Development LP. The information contained herein is subject to change without notice. The only warranties for Hewlett Packard Enterprise products and services are set forth in the express warranty statements accompanying such products and services. Nothing herein should be construed as constituting an additional warranty. Hewlett Packard Enterprise shall not be liable for technical or editorial errors or omissions contained herein.

Intel and Intel Xeon are trademarks of Intel Corporation in the U.S. and other countries. Microsoft and Lync are either registered trademarks or trademarks of Microsoft Corporation in the United States and/or other countries.

4AA5-8231ENW, August 2016, Rev. 2

