

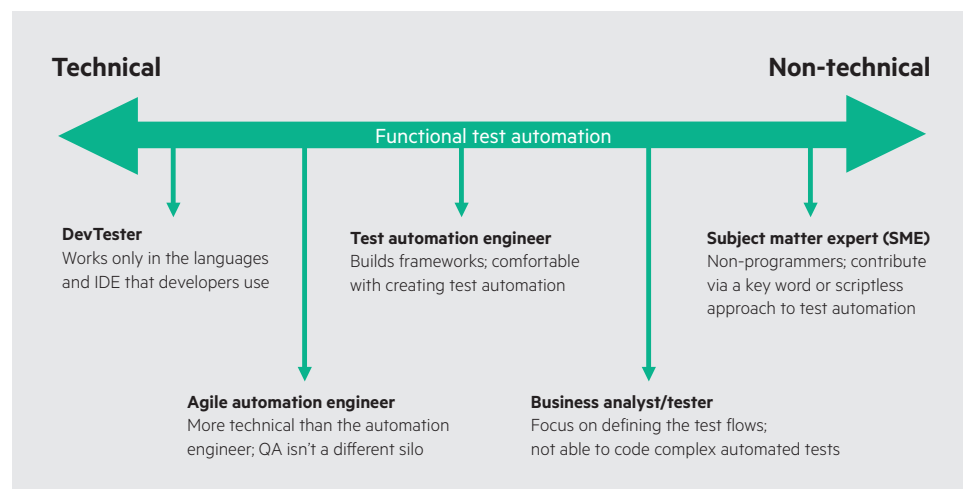


# HPE Unified Functional Testing

The complete solution for automation of web, mobile, API, and packaged applications

HPE Unified Function Testing (UFT) software automates functional testing through an intuitive, visual user experience that ties manual testing, automated software testing, and framework-based testing together in one integrated development environment (IDE). The capabilities in HPE UFT help you significantly reduce the cost, time spent, and complexity of the functional testing process while driving continuous quality.

## Meeting the needs of technical and non-technical users



**Figure 1.** HPE Unified Functional Testing addresses the testing needs of any organization regardless of skillset.

## Continuous testing

HPE UFT is the industry-standard for software test automation, with proven capabilities for meeting the challenges of today's agile, modern application teams.

HPE UFT leverages a broad ecosystem of integrations—from source control management tools such as Subversion or Git, to continuous integration tools such as Jenkins and TeamCity. Functional tests can be triggered as part of the regular build process and run results reported in HPE Application Lifecycle Management (ALM) or HPE Quality Center. Teams are instantly alerted to issues to keep Agile projects on track.

HPE UFT also includes the HPE UFT Pro (LeanFT) solution designed for Agile testing where test creation is done in Microsoft® Visual Studio(C#) and Eclipse/IntelliJ(Java).

## API and Web services testing

HPE UFT API and Web services testing capabilities give your teams an extensible framework for creating and executing functional tests of “headless” applications or the non-GUI parts of an application. With an easy-to-use, visual interface, HPE UFT gives you the ability to test at the headless layer without the need for extensive coding.

HPE UFT is also fully integrated with HPE Service Virtualization, powerful software that enables your testers to use simulated services that stand in and behave like the actual application component. With HPE UFT integration to HPE Service Virtualization, your automated testing teams can achieve delay-free continuous testing.

## Distributed testing with new run-time engine

The new run-time engine in HPE UFT allows parallel execution on different platforms, mobile devices and servers (real and virtual) without the need for a full HPE UFT license or installation.

## HPE Business Process Testing

Teams can use the HPE Business Process Testing (BPT) framework for keyword-driven and scriptless automation for web, desktop, and packaged applications such as Oracle, PeopleSoft, and SAP. Through creation of reusable business process components capable of handling both manual and automated contents, and its automatic component and process flow change detection capability, HPE BPT helps simplify test automation for less technical users such as business analysts and subject matter experts (SMEs). This speeds up test creation and maintenance for faster testing ROI.

## Cross-browser testing

HPE UFT provides extensive cross-browser support for Chrome, Firefox, Safari, and Internet Explorer®. Tests can be recorded on one browser and the same script can be used with no adaptations to test multiple browsers and configurations. If desired, the same test run can cover all the different browsers by having each test iteration executed on a different browser, with one report covering the test flow status on all desired configurations.

## Mobile testing

As a key component of HPE Mobile Center, HPE UFT allows real device testing on multiple operating systems. It enables your mobile testing teams to both automate and accelerate testing, reusing testing scripts on multiple real devices. The solution is built to support frequent-intensive regression and functional testing, and it supports both Agile and continuous development processes.

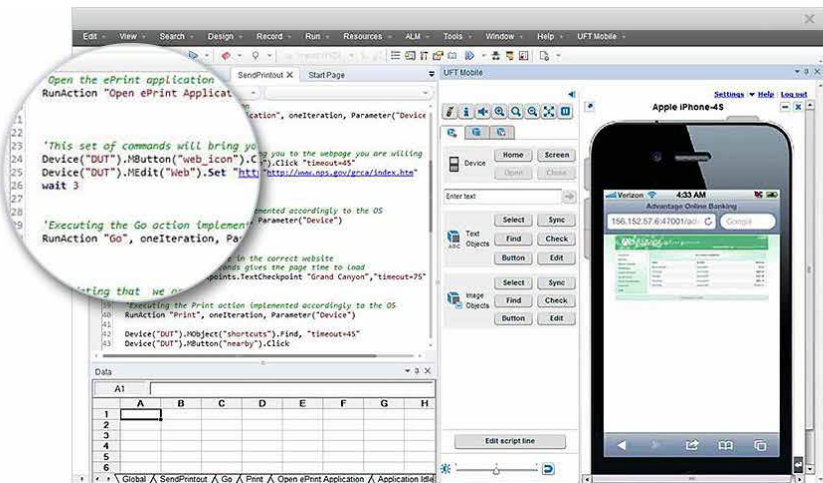


Figure 2. Use the same automation technology of HPE UFT for real mobile device testing.

## Key features

- Single unified interface: Automate testing for both GUI functionality and the back-end service parts of an application.
- BPT integration: Create, edit, and maintain BPT framework tests directly from HPE UFT.
- Parallel execution on major OS and browsers: Run tests on the latest versions of Windows, Linux and MacOS and browsers like Chrome, IE, Firefox, and Safari
- Advanced object recognition and management: Create and execute test scripts using robust object recognition and management technologies including Object Spy, Object Repository, Object Identification Center and Application Model.
- Manual test conversion: Jump-start new automations by importing manual tests from HPE Sprinter; convert the results into reusable test automation assets for regression and integration tests.
- SAP testing: Leverage extensive support for SAPUI5 objects and methods, SAP Web Dynpro, ABAP, and the SAP NWBC Desktop application.
- Version control: Version control can be done with HPE ALM or a standard source control system like Subversion (SVN) or Git repositories.

Connect with your peers and HPE  
Software experts at  
[HPE Live Network](#)  
[HPE Future of Testing Blog](#)  
[TechBeacon.com](#)  
[UFT Online Help Center](#)

**Table 1.** Technology platform support

<b>Supported GUI technologies</b>	Web, Java, .NET, Flex, Oracle, SAP, PeopleSoft, Siebel, Delphi, Terminal Emulators, PowerBuilder, Stingray, VisualAge, QT, and more
-----------------------------------	---

**UFT minimum system requirements**

<b>Host processor</b>	3 GHz or higher
-----------------------	-----------------

<b>Operating system</b>	Windows® 7 Service Pack 1 (32-bit or 64-bit)
-------------------------	--

<b>Memory</b>	4 GB
---------------	------

<b>Hard disk drivet</b>	7,200 RPM
-------------------------	-----------

<b>Color settings</b>	High color (16-bit)
-----------------------	---------------------

<b>Graphics card</b>	Graphics card with 64 MB video memory
----------------------	---------------------------------------

<b>Free hard disk space</b>	20 GB of free disk space for application files and folders
-----------------------------	--

Learn more at  
[\*\*HPE UFT Help Center\*\*](#)



Sign up for updates