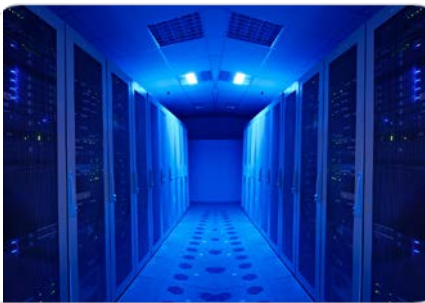


MANAGING THE HIGH DEMANDS OF TODAY'S WORKLOADS

January, 2015

To take full advantage of cutting edge technologies, businesses need to take the opportunity to update their hardware to meet the demands of today's workloads and gain the significant benefits that a modern IT infrastructure brings.

→ **Jim Rapoza**, Senior Research Analyst & Editorial Director,
Information Technology



The cool technologies that organizations are leveraging to gain advantages, such as mobile, cloud and big data analytics are the same ones that increase complexity and add to the workload challenges of IT executives.

The complex IT environment of today is ever changing, including vast leaps forward in recent years. The task of managing IT infrastructures has grown incredibly complex, so staying ahead of workload requirements is critical.

Think about it. What types of workloads did IT teams worry about in years past? Emails, web servers, file systems, databases, storage and that's about it. Now compare this to the workloads of today and the challenges they bring. For example, email versus real-time video and voice communications, traditional stand-alone databases versus all-encompassing big data or off-line backup and tape restores versus high-speed and near real-time high availability systems; in all of these cases, the workload of today is much more demanding and complex.

As new technologies and trends continue to evolve, the needs and expectations of businesses have to evolve with them. This evolution leads to changes in what the toughest challenges facing businesses are today.

When Aberdeen asked IT organizations what the top technologies being deployed today were, a number of key technologies made it to the top of the list. These included:

- Real-time communications and video
- Server virtualization and private and hybrid cloud
- Big data
- Mobile-first infrastructure

However, when we asked these same organizations what the top challenges were when it came to providing a high performing and optimized IT infrastructure, we saw some interesting similarities:

- Increased real-time and high bandwidth traffic (real-time communications and video)
- Increasingly virtualized and cloud-based infrastructure
- Rising volume of data for initiatives such as big data
- Higher demand for mobile access

No More Living in the Past

When faced with increasingly complex new technology trends, and the more demanding and diverse workloads that come with them, what can you do to create an optimized and high performing IT infrastructure?

Based on data from the Aberdeen report, [*Optimize IT Infrastructure to Maximize Workload Performance*](#), businesses that are Best-in-Class when it comes to IT infrastructure performance and reliability are those that are most likely to stop living in the past and embrace the latest technologies and improvements in server and management infrastructure. In fact, the data from this report shows that, when compared to all other

→ [**Read the full report, “Optimize IT Infrastructure to Maximize Workload Performance”**](#)

→ [**Related Research “The New Enterprise Datacenter: Let the Workloads be the Guide”**](#)

Best-in-Class companies are 25% more likely to have updated their data center server infrastructure than All Other businesses.

businesses, the Best-in-Class are 25% more likely to update their server infrastructure to meet the demands of current workloads.

Across the board, the Best-in-Class also leverage processes and strategies that give them increased visibility into their infrastructure performance and allow them to have real-time and automated responses to potential issues that can impact performance and cause downtime. These processes and strategies include usage of high availability systems, dynamic workload balancing, automated provisioning and real-time analysis of application and infrastructure performance.

By leveraging these strategies, the Best-in-Class ensure that they are able to take advantage of today's technologies, while being able to successfully manage and handle the demanding and complex workloads that come with them. Key among these strategies is ensuring that their infrastructure is fully optimized and updated with the latest hardware and server infrastructure available.

With updated hardware, you can achieve benefits like faster application installation, greater cost reductions and higher end-user satisfaction. Ultimately, these benefits can help you meet SLA requirements and add more value to the business.

About Aberdeen Group

For 26 years, Aberdeen Group has published research that helps businesses worldwide improve performance. We identify Best-in-Class organizations by conducting primary research with industry practitioners. Our team of analysts derives fact-based, vendor-agnostic insights from a proprietary analytical framework independent of outside influence. The resulting research content is used by hundreds of thousands of business professionals to drive smarter decision making and improve business strategy.

Aberdeen's content marketing solutions help B2B organizations take control of the Hidden Sales Cycle through content licensing, speaking engagements, custom research, and content creation services. Located in Boston, MA, Aberdeen Group is a Harte Hanks Company.

This document is the result of primary research performed by Aberdeen Group. Aberdeen Group's methodologies provide for objective fact-based research and represent the best analysis available at the time of publication. Unless otherwise noted, the entire contents of this publication are copyrighted by Aberdeen Group, Inc. and may not be reproduced, distributed, archived, or transmitted in any form or by any means without prior written consent by Aberdeen Group, Inc.