



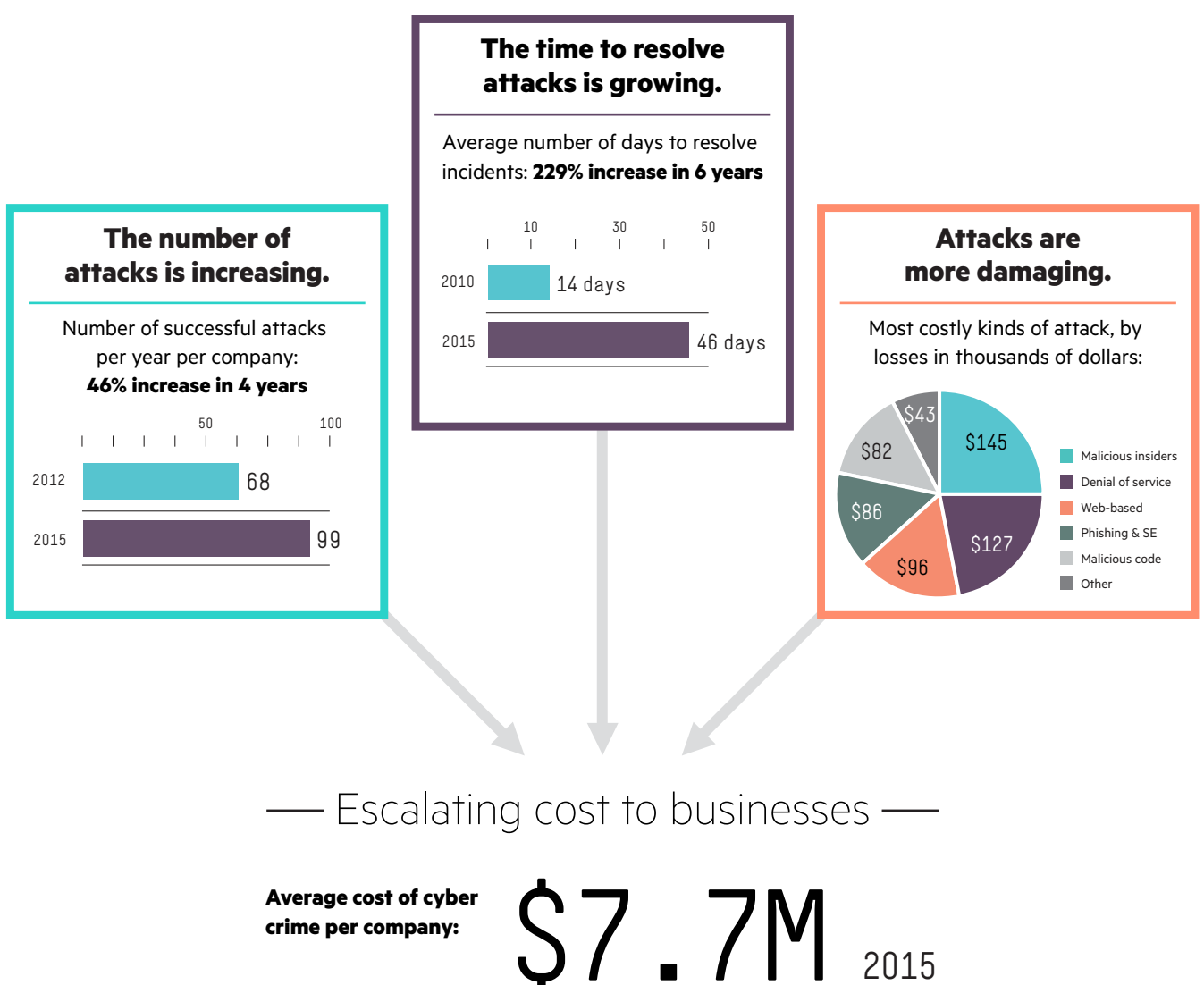
**Hewlett Packard
Enterprise**

Fight cyber crime

For each of the past six years, the Ponemon Institute has explored the cost of cyber crime in a study sponsored by Hewlett Packard Enterprise Security. The 2015 study found that while the cost of cyber crime continues to rise, security technologies are helping companies detect and contain attacks to reduce losses.

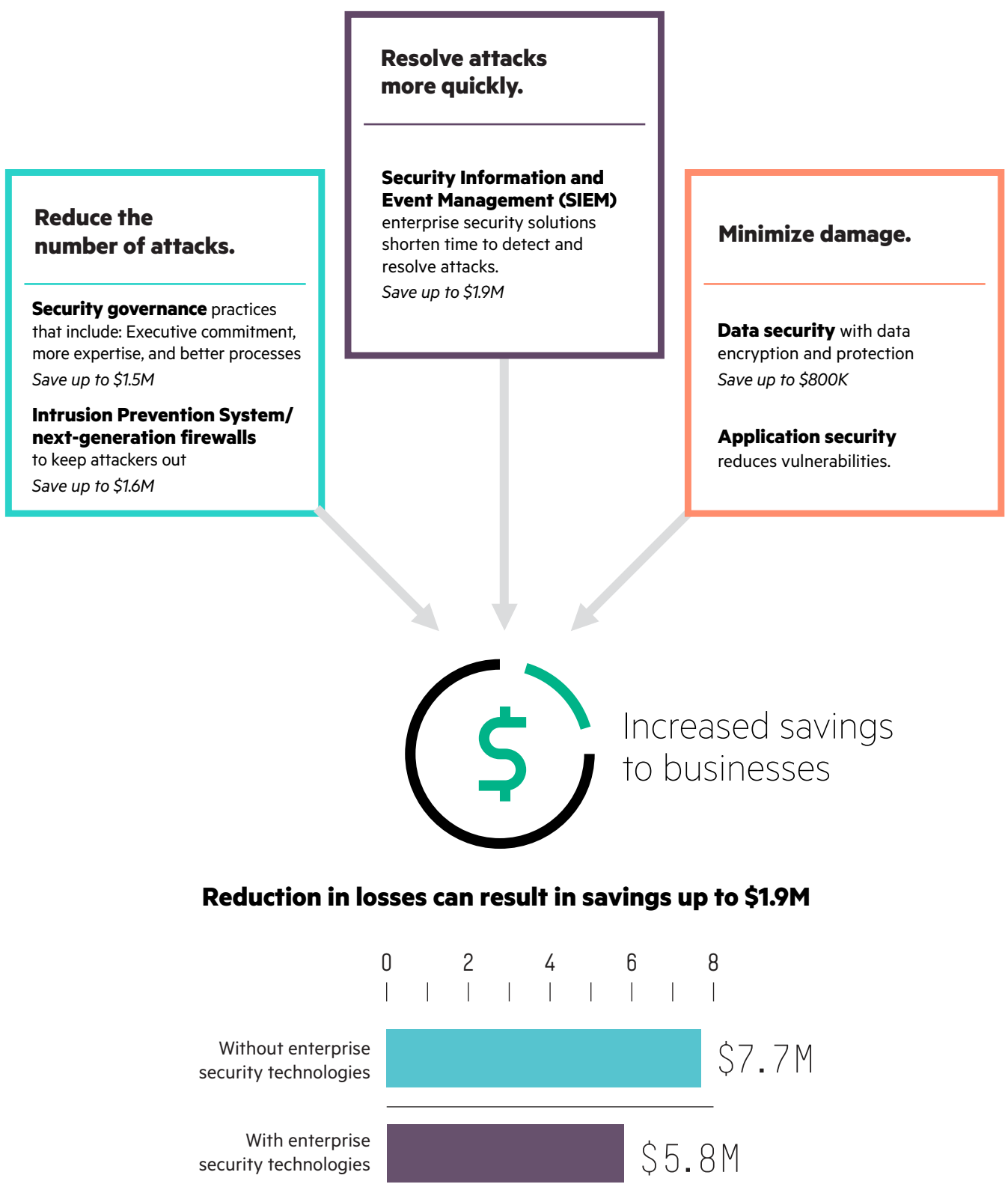
The problem

Costs and incidence of attacks are high and growing.

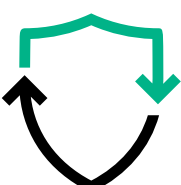


The solution

Fight back. Attack threats before they attack you.



HPE—Protect your digital enterprise



**Defend your users.
Secure your applications.
Protect your data.**

Predict and disrupt.

Shorten incident duration.

Share security intelligence.

Learn more at hpe.com/software/ponemon

Data from Ponemon Institute 2015 Cost of Cyber Crime Study, based on study of 252 companies in 7 countries.

© Copyright 2014-2015 Hewlett Packard Enterprise Development Company, L.P.

4AA5-4930ENW, November 2015, Rev. 4