

# Cloud analytics with HP IT Executive Scorecard



Simple financial and management reporting



Our customers balance cloud investments and prove the effectiveness and efficiency of their cloud strategy with easy-to-use analytics.

## Tackle the top three management questions

By simplifying management and financial reporting and by covering cloud and hybrid environments (mixed cloud and on-premise), the HP IT Executive Scorecard helps to address the needs of three areas:

- How well are you managing operations overall?
- Are your services aligned with business needs?
- How can you optimize resources and suppliers?

As cloud-based service options have proliferated, many organizations are trying them out to see where they fit in the overall delivery of IT services. In some cases, it is driven by IT but very often the selection of a cloud vendor starts as a line-of-business decision. The result is a wide variety of services being delivered by multiple service partners such as Amazon, Microsoft®, HP, and other cloud vendors.

The ideal role for IT is as a broker of these services—using their expertise to ensure the organization as a whole is choosing the right provider and getting value for money. Often, this will include a comparison of cloud vs. on-premise deployment and may sometimes require a hybrid of the two.

The HP IT Executive Scorecard spans all these dimensions. The top cloud vendors and internal IT systems give anyone the information they need to make better decisions and improve service delivery .

With the IT Executive Scorecard, it is simpler to automate data collection and analysis from multiple sources, including non-HP products and service providers, to provide a single view of cloud and on-premise IT metrics. In addition, the IT Executive Scorecard now includes sophisticated IT financial management (ITFM) tools to provide comprehensive financial data. Now you can show performance, capacity, utilization, and cost side by side to really understand how well you are managing services.

## Hybrid cloud management

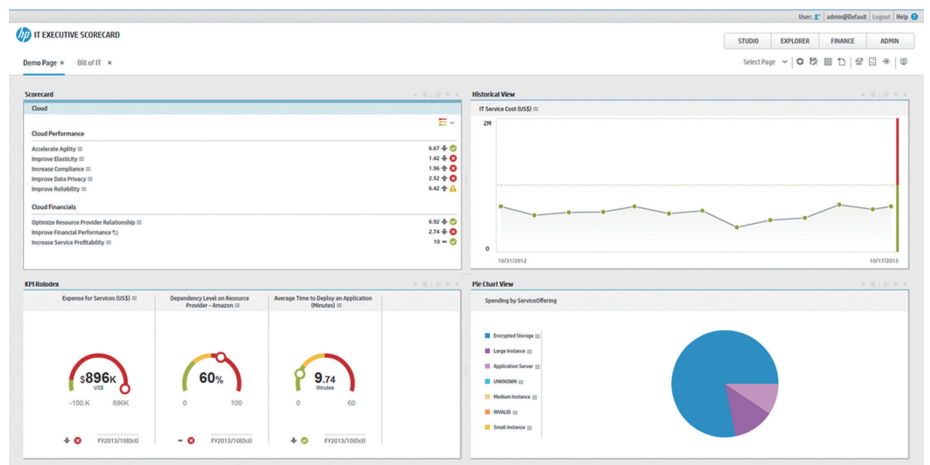
In many companies, lines of business or application teams are bypassing IT and directly consuming and paying for public cloud services. When this happens, companies lose visibility into who is doing what in the public cloud, exposing the company to additional risk, and lack of visibility or control of public cloud consumption and costs, and understanding if public cloud resources are meeting performance expectations.

IT organizations want to provide their line-of-business and application team customers with access to multiple public cloud resources, but in such a way that they can provide overall governance of public cloud resource access and usage.

In addition, many IT organizations wish to be able to use public cloud resources to provide additional capacity to on-premise based IT services during peak times, where it is not cost effective to purchase on-premise infrastructure for short periods. In this case, application services can “burst” to the public cloud for additional capacity as needed.

IT Executive Scorecard provides the information needed for IT to operate as a service broker, with insights into service cost, performance, and utilization.

Figure 1. Cloud insights dashboard



## IT as a service broker

IT organizations need to act as a cloud service provider in order to compete with other cloud providers. They need to ensure their services meet the agreed upon SLAs at appropriate cost. They need insight into SLAs, costs, resource utilization, available capacity, service health, and more. They need to ensure their services are secure, compliant, and can respond with agility to the changing needs of the business.

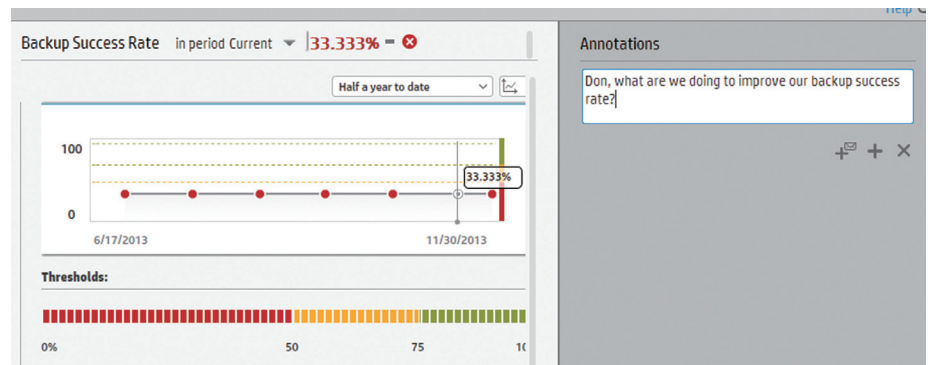
## Key features and benefits

The HP IT Executive Scorecard complements the operational reporting provided within IT management tools and focuses on analytical reporting across multiple cloud and on-premise sources to bring together data into a more strategic over-arching view—answering the question, “How well are we delivering in a hybrid environment?”

Many companies spend weeks pulling information together from multiple sources to create complex spreadsheets, which become cumbersome and unreliable as reporting sources. Other tools only focus on one cloud vendor. The HP IT Executive Scorecard allows you to:

- Use a single pane of glass to view IT business services, programs, and financial status
- Understand service costs, utilization, and other factors whether delivered in cloud, on-premise, or in a hybrid environment
- Improve business agility with customized scorecard views to meet different user needs
- Show historical data to highlight improvements and identify negative trends early
- Automate and decrease effort required for the data gathering process to enable near real-time management reporting
- Cascade key performance indicators (KPIs) across layers of scorecards
- Access the information from your desktop, a tablet, or a smartphone
- Add notes using collaboration in the context of a KPI or objective

**Figure 2.** Built-in collaboration



The provision of a vast array of best-practice out-of-the-box content is what makes IT Executive Scorecard unique from other dashboards. In addition, the pre-built integrations and data model make it much faster to deploy than typical business intelligence tools. The value of the KPI approach means that organizations can benefit from the IT Executive Scorecard even with “immature” underlying systems or just one or two data sources, while allowing you to establish your own benchmarks as you grow the scope of measurement.

**Learn more at**  
[hp.com/go/xs](http://hp.com/go/xs)

**Sign up for updates**  
[hp.com/go/getupdated](http://hp.com/go/getupdated)



Share with colleagues



Rate this document

© Copyright 2013 Hewlett-Packard Development Company, L.P. The information contained herein is subject to change without notice. The only warranties for HP products and services are set forth in the express warranty statements accompanying such products and services. Nothing herein should be construed as constituting an additional warranty. HP shall not be liable for technical or editorial errors or omissions contained herein.

Microsoft is a U.S. registered trademark of the Microsoft group of companies.

4AA5-0455ENN, December 2013

