

Brochure



Enable workplace productivity

Hewlett Packard Enterprise Transformation Workshop

HPE
POINTNEXT

Capture a complete view of Workplace and Mobility

Transformation—in just one day

Interactive by design, during the one-day HPE Workplace and Mobility Transformation Workshop, our senior HPE consultants use highly informative visual displays to facilitate an active discussion and also share what they have learned from experience.

By working with your team of senior IT decision-makers and selected key stakeholders, HPE facilitators create an environment that aligns key initiatives and priorities. Ultimately, the goal of the workshop is to enable faster decision-making and cross-team collaboration. So you can shape your own path and ensure IT takes a leadership role in delivering new business value.

The mobile, contextually-aware and connected world is endemic in our personal lives, embraced like no other technology innovation in recent history. But the workplace experience has struggled to keep pace, threatening for the first time in a generation to make us less productive at work than we can be in our personal lives. While our consumer persona merges with our corporate one, as end users we want the personalization, context and simplicity of experience in our work life which make us productive anywhere in our personal lives. Today's reality is, as an individual, we end up finding our own solutions to productivity requirements and these solutions are predominantly sourced from within the consumer marketplace—outside of the control and governance of organization IT. New risks pop up as quickly as new apps and corporate data is leaving the enterprise through a multitude of devices, apps, and communication channels. These channels are all self-aggregated by end users to perform their jobs and contribute to their communities with one single objective—to be more productive.

The real pressure on the enterprise IT department today is to find ways to engage with this new end user by meeting the consumer benchmark, deliver compelling digital experiences and increased workplace productivity. Without driving a transformation aligned to the pressure that the new behavior of your users is exerting, Enterprise IT will increasingly lose relevance to the business. The consumer persona will increasingly move away from the a status-quo where IT dictates the tools and migrate their productivity into consumer cloud-connected services. To remain relevant, enterprise workplace environments must undergo a profound transformation.

Your people are embracing digital, is your workplace?

You may still be unsure about the best way to begin your journey, calculate the return on investment, and plan for potential risks. Each organization has its own needs around performance, security, control, and availability. So you'll need to understand where and how you can most effectively enable a digital workplace that can increase both individual and team productivity.

At HPE, we take a holistic view with a practical approach to work with you to define the right steps for your unique journey. The HPE Workplace and Mobility Transformation Workshop is an ideal starting point.

Shape your own workplace and mobility strategy

A successful workplace and mobility strategy begins by focusing on your business priorities and outcomes. It starts with business value, as you ask:

- Why should I concern myself with the consumer-oriented behavior my users now exhibit?
- What in my organization's culture needs to change to embrace digital productivity?
- How can I define the change initiative? What are key success factors?
- What are the transformation steps I need to take?
- How do I promote the use of "bring your own device" and make the most of it?
- How do I transform my Windows® client and applications portfolio to be more available to this proliferation of highly mobile end-points?
- Where do I start with building a strategy to include the development of new mobile apps?
- Will these services be secure enough to protect business data?
- Will the IT organization be able to still meet regulation and compliance needs?
- Where can I apply new technologies to make the biggest difference?
- What mobility technologies do I need to integrate?

Six reasons to sign up for the HPE Workplace and Mobility Transformation Workshop

- Discover related projects that are strategic, transformational, and promise faster return on investment and quicker gains in business value
- Realize the benefits, scope, scale, and critical success factors for adopting next generation workplace solutions and developing mobile solutions
- Gain stakeholder buy-in and add traction to any existing workplace or mobility initiative
- Draw on best practices from industry-measured trends as well as HPE's wealth of experience working with customers like you from around the world
- Understand your current situation, as well as future aspirations, then define a suitable roadmap
- Take a holistic approach to workplace and mobility IT services, including technology, process, people, and governance

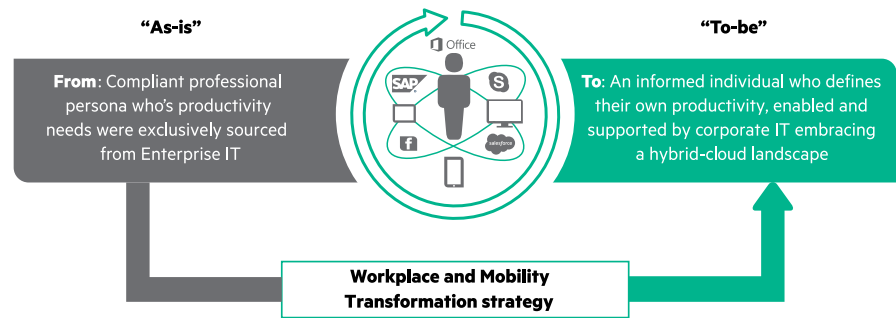


Figure 1: HPE Workplace and Mobility Transformation

- How can I integrate my communication and collaboration systems with those of my partners and customers?
- How do I enable my users to connect from a variety of devices and from a variety of locations while still protecting my network?
- What are the best practices; how are other HPE customers responding?

Experience your workplace and mobility transformation

Enterprise mobility radically changes the way your tools, information, applications, and processes are consumed and also dictates a fundamental change in the way they are delivered. It enables you to quickly and securely provide access to highly scalable and flexible workplace services on any device from any network.

In the HPE Workplace and Mobility Transformation Workshop, we:

- Facilitate alignment of key stakeholders
- Distill discussions to components required for a practical strategy
- Identify quick wins and longer term priorities that can work for your business
- Draw actionable next steps

Before you can unlock the potential of the digital workplace, you need to understand its critical success factors, benefits, challenges and how they relate to your business. You need to map out a path that is specifically designed to support your business objectives and technology goals—now and in the future. We can help you do just that—taking you through the most relevant topics as part of the experience:

- **Setting the scene**—Spend time examining the pressures that are driving this transformation, both from an external as well as an internal perspective. What is your current state? Where do you want to be—by when?
- **Thrive in the digital landscape**—We are in the digital revolution, the age of the consumer. This tectonic shift has changed the way that employees engage and interact with both each other and their customers and partners. Organizational culture and hierarchy must also be included. Users are demanding empowerment in the way they become most productive.
- **Untether personal productivity**—Explore how we are productive as individuals, the tools, applications and devices that we use and the information to which we need access. Productivity benefits can be significant in two key ways: lowering costs through driving efficiency or boosting output or revenue through innovation.

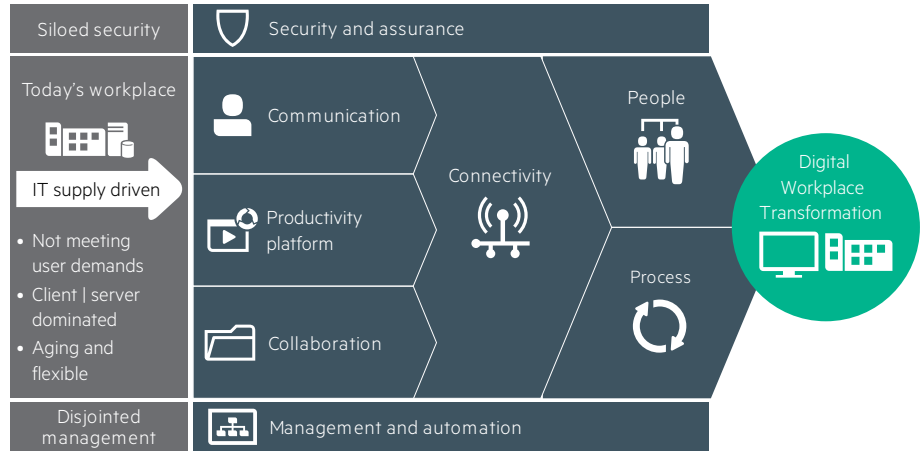


Figure 2: HPE Digital Workplace framework

Get started now

After you have decided on the role you want the digital workplace to play in your organization, HPE will support you in your efforts to create actionable next steps and execute them. Whether you decide to build a more detailed roadmap or start your implementation right away with identified quick wins, we can help. Over the years, we've built an array of solutions that enable you to create, consume, or buy workplace services in support of your chosen strategy. Using these building blocks—foundational and enabling technologies and services—you can realize the true potential of anywhere productivity.

Our workplace and mobility solutions allow you to tailor your approach in the way that's right for your business. We help you build on your existing technologies to deliver services that can meet the new consumer benchmark, and keep you relevant to the business.

- **Enable instant communities**—A communication and collaboration strategy that is available seamlessly on any device is more than deploying good technology; it's also about both structured and dynamic interactions among people and functions. How will your workplace and mobility strategy enable people to connect and collaborate in new ways and drive team productivity to new levels?
- **Achieve seamless secure access**—Delivering the right access to what is needed to be our most productive as individuals and teams while maintaining required security is critical. Security which presents itself as a barrier will result in users bypassing corporate IT services and light-touch security can create significant business challenges. A balance, based on your business's risk factors must be struck. A wireless first workplace with context and personalization and the ability to rapidly provision and manage this unpredictable demand requires a new approach to networking in the workplace, making it transparent to the user.

Go with experienced workplace and mobility consulting services

Is it your goal to seamlessly connect employees, partners and customers to tools, information, services and expertise to maximize productivity? To deliver compelling user experiences that engage and empower? If so, it helps to have a trusted advisor with the experience and practical approach to help navigate you through the best options for your organization, and how best to source, build, deliver, and manage them. Here are good reasons to go with HPE:

- Expertise aligned to your needs and speed
- Reliable, secure, and delivered globally
- A holistic approach
- Collaboration at every turn



Sign up for updates

Learn more at hpe.com/enable