


Hewlett Packard
Enterprise



Control your infrastructure

HPE OneView for VMware vCenter



Enhance the control of your IT

New integrations in VMware vRealize Operations Manager and Log Insight deliver powerful Analytics and deeper troubleshooting tools to your VMware administrators.

- Understand usage trends: focus only on what is important
- Correlate events for fast troubleshooting: Delivers root cause and impact analysis with combined VMware and HPE dashboards
- Optimize resource utilization: Make changes with confidence of understanding the physical and virtual

With HPE OneView, use new VMware vRealize Operations Manager integration with standard edition—without having to upgrade to advance! ...Only from HPE!

One unified management solution

To ensure business growth and success, you need to create competitive differentiation. Differentiation requires innovation. And innovation requires leveraging your IT and transitioning to a software-defined data center (SDDC). You can do it—with HPE OneView for VMware vCenter.

Meet changing demands

Your technology infrastructure is integral to your business operations and success. But as complexity continues to rise—with more physical systems and virtual machines running in a geographically distributed environment—growing your technology infrastructure is increasingly challenging. Manual deployment processes are time consuming and often yield inconsistent results.

IT organizations are rapidly moving toward software-defined data centers, and HPE and VMware are partnering to help our joint customers streamline this transition. Working together, HPE and VMware integrated HPE OneView with VMware vCenter Server—enabling you to automate day-to-day management and provisioning tasks. Doing so helps you intuitively respond to business demands as they occur, providing automated alerts to potential infrastructure issues—so your administrators can resolve them before they impact service. With HPE OneView integration, IT organizations can even deploy a complete VMware vSphere cluster in only five steps.¹

Seamless integration with VMware vCenter

HPE OneView for VMware vCenter seamlessly integrates the manageability features of HPE OneView, HPE ProLiant servers, HPE BladeSystem, HPE Networking, and HPE Storage into the VMware vCenter console. The integration of HPE OneView with VMware vCenter enables you to take the next step toward the SDDC by allowing virtualization administrators to automate control of HPE compute, storage, and networking resources without detailed knowledge of each device. Today, HPE OneView for VMware vCenter is the only platform that can provision, monitor, update, and scale resources without having to leave the vCenter console.

By integrating HPE Converged Infrastructure management features directly into VMware vCenter, administrators can use a familiar VMware management tool to provision, monitor, update, and scale HPE compute, storage, and network resources without having to leave the vCenter console. This integration simplifies everyday management tasks. Using wizards, administrators can deploy a VMware vSphere cluster uniquely in five¹ easy steps and easily create storage volumes and vSphere data stores. OneView makes the delivery and maintenance of IT services fast, cost-effective, and reliable. The visual mapping of virtualized workloads to physical resources makes it possible to troubleshoot network problems in 30² seconds instead of two hours.

¹ Based on HPE internal testing comparing HPE OneView vs. Cisco UCS, September 2013

² Based on HPE internal testing comparing HPE OneView v1 vs. Cisco UCS, September 2013. Test was to identify services that will be affected when a network needs to be retired in an environment of 160 servers—HPE OneView takes about 30 seconds and 4 steps vs. UCS takes about 2 hours and >480 steps

12X

faster for administrators to complete management and provisioning tasks (based on HPE OneView analysis).

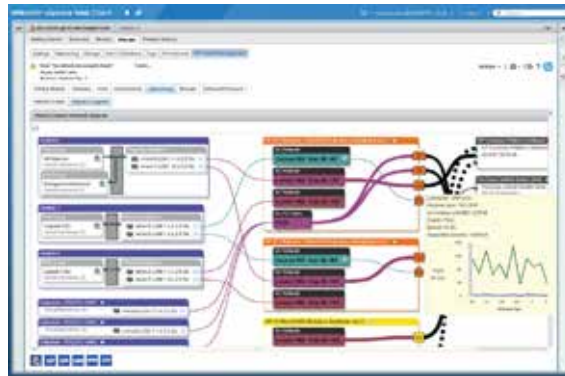


Figure 1: Comprehensive management of the HPE Virtual Connect network

Plug in and run

Easy to download, deploy, and use, the solution is packaged as a plug-in for VMware vCenter and serves as an intelligent bridge between vCenter, HPE Converged Infrastructure, and HPE OneView. The solution includes three modules.

Server module

Comprehensive system health and alerting in VMware vCenter Server

- Deep levels of HPE server, blade, firmware, and infrastructure inventory and management
- End-to-end view of the Virtual Connect networking environment
- One-click host- and cluster-level networking configuration
- Remote control and deployment of servers and OS
- Ability to create or grow VMware clusters from HPE OneView profiles

The server module is licensed as part of HPE Insight Control or HPE OneView.

Storage module

- Monitor health, configuration, and capacity of HPE Storage in VMware vCenter Server
- Visualize the relationship between the VMware virtual machines, ESX servers, and HPE Storage arrays
- Create, expand, or delete data stores on HPE arrays
- Build a virtual machine from a template on HPE arrays
- Include vSphere Storage application programming interfaces (APIs) for Storage Awareness for HPE arrays

The Storage module is free to use with HPE supported storage solutions.

Proactively manage change

Rather than view your physical and virtual infrastructure as two distinct entities, you can use HPE OneView for VMware vCenter to manage both environments as one. Providing detailed insight into the relationship between your physical and virtual infrastructures, HPE OneView for VMware vCenter Server automates tracking, enhances management productivity, and helps you proactively manage change—leading to higher overall quality of service.



Reduce downtime

Delivering essential infrastructure health and configuration information, HPE OneView for VMware vCenter helps unlock the potential of your HPE Converged Infrastructure. With VMware vCenter Server, you can:

- Decrease the time administrators spend managing change and unplanned downtime. Administrators get a deep understanding of the relationship between the physical and virtual infrastructure.
- Significantly reduce remediation time with easy-to-use health and configuration dashboards. Newsfeeds of important host and storage events track root causes and enable admins to take action when problems arise.



A fresh approach to infrastructure management

Shifting the focus from “devices” to “how people work,” HPE OneView offers a fresh approach to converged infrastructure lifecycle management. OneView features a consumer-inspired experience that aligns with how users interact with complex and highly dynamic systems, so tasks and collaboration are much more natural, streamlined, and automated. As a result, OneView simplifies the management of compute, network, and storage resources in physical and virtual environments.

HPE OneView provides

- A modern, consumer-inspired design to increase your productivity and collaboration, enabling you to deploy infrastructure up to 66 times faster³
- A software-defined architecture that automates operations and captures your best practices, delivering up to nine times faster server configuration⁴
- An open, extensible platform design that rapidly adapts to your business needs, with up to a 220 percent return on investment (ROI) and six month payback⁵

Developing solutions for major social and environmental challenges
hp.com/hpinfo/globalcitizenship

³ Based on actual customer results

⁴ Based on HPE internal testing of HPE OneView vs. manual operations, September 2013

⁵ HPE OneView ROI calculator based on a scenario of 320 BladeSystem servers managed by HPE OneView over three years vs. traditional management tools vs. manual operations, September 2013 of 320 BladeSystem servers managed by HPE OneView over three years vs. traditional management tools

⁶ Based on HPE customer data, June 2013. Twelve data center sites were built in one night with HPE OneView vs. two sites at a time taking 66 days with existing technology.



Sign up for updates



When managing HPE Storage, you receive detailed mappings of the virtual environment to the physical environment. This feature enhances the VMware and HPE Storage administrator’s visibility into logical unit number attributes, path configuration, replication information, and storage array health. The plug-in storage module shows path configurations between virtual machines, data stores, virtual disks, physical disks, and storage array disks. In addition, the storage module interface offers a flexible, tabular format with intuitive controls to select and sort mappings. The tabular format enables administrators to arrange, select, or hide columns to create customized views.

Increase capacity on demand

HPE OneView for VMware vCenter contains powerful provisioning tools that are directly accessible from the vCenter console. These tools allow administrators to create and expand compute and storage resources to support your virtualized environment.

When physical compute resources are needed, you can deploy on bare-metal HPE ProLiant servers or blades in the VMware ESX/ESXi environment. Once provisioned, you can send these newly available compute resources to the appropriate VMware cluster.

During large-scale deployments, unified management of virtual and physical infrastructure enables you to produce reliable and consistent configurations across numerous servers and multiple sites, while also lowering overall IT resource requirements. The result—faster server deployment. In fact, Atlantic Health achieved 12X faster server deployment—20 minutes as opposed to four hours—by using HPE OneView for VMware vCenter.⁶

When additional storage resources are required, administrators can use the powerful HPE Storage provisioning tools, directly accessible from the VMware vCenter console “context” menu. These tools allow administrators to:

- Create and expand data stores
- Delete empty data stores and unassociated volumes
- Create new volumes or array-based snapshots, depending on the requirement
- Create virtual machines from a template or clone virtual machines

Get the service you need

To expedite your deployment of HPE OneView and HPE OneView for VMware vCenter, you can work with HPE Services as your single-source provider. HPE Services can help your organization harness the unrealized potential of your HPE and VMware environment. You can discover how to connect the intelligence scattered across your ecosystem and reconcile data silos. You can flow the knowledge gained across your business—and then leverage the information to drive better results.

Our services range from strategy and governance to technology, training, and process re-engineering. With HPE Services, you’re covered—every step of the way.

Learn more at

hpe.com/info/ovvcenter
hpe.com/info/insightcontrol
hpe.com/info/oneview