

HP NonStop Performance Essentials

Data sheet

HP NonStop Performance Essentials is a plug-in to HP NonStop Cluster Essentials to monitor the performance of NonStop and Linux systems from HP Systems Insight Manager (SIM)—based console.

HP NonStop Performance Essentials is a plug-in to HP NonStop Cluster Essentials. It provides a plug-in component to HP Systems Insight Manager and host agents to support performance monitoring of homogeneous clusters consisting of NonStop systems, and heterogeneous clusters consisting of NonStop and Linux systems. The software allows a user to monitor the performance of NonStop and Linux clusters or individual systems using the HP SIM interface. The Performance Essentials SIM component and host agents are responsible for gathering performance metrics from managed NonStop and Linux systems in the clusters, representing them in the HP SIM GUI, determining the status of clusters periodically, and providing alert notifications based on user-defined thresholds.

Features

HP NonStop Performance Essentials provides the following features:

- **Performance monitoring:** The product monitors CPU, disk, process, Expand line, TMF transaction, ServerNet, SQL Procedure, File Open and CLIM entities for NonStop; and CPU, disk, process, and network entities for Linux. This information is displayed in a graphical format with visual alerts to highlight areas that require attention. In addition, each entity has an associated trend graph which shows its recent usage pattern. A graphical operational drill-down interface is also provided to pinpoint issues or gather specific details.

- **Alert notifications:** The product supports the definition and configuration of particular performance threshold values that trigger an event alert notification. The notifications can be routed through e-mail or SMS text.
- **Security:** All the communication between the HP NonStop Performance Essentials product and managed systems is secure and all data is encrypted.

Components

HP NonStop Performance Essentials has the following components:

- A Windows® component
- A NonStop component
- A Linux component

The Windows component is installed on each HP SIM Central Management Server (CMS) after installation of HP NonStop Cluster Essentials. It installs all of the components required to interface to the particular agents on NonStop and Linux systems. NonStop and Linux host agents are installed on all managed NonStop and Linux systems to enable the collection and presentation of performance data to HP SIM.



Figure 1: System tab of a NonStop cluster display with aggregated performance status



HP NonStop Performance Essentials accumulates the performance status from individual NonStop and Linux systems and provides a single aggregated performance status indicator for each cluster.

Functionality

HP NonStop Performance Essentials provides the following functionality:

- Integrates with HP SIM and NonStop Clusters Essentials
- Provides seamless SIM GUI for performance monitoring
- Supports NonStop systems and clusters
- Supports Linux systems and clusters
- Supports mixed NonStop and Linux configurations
- Provides integrated alert notification management from a single user interface

Integrated performance monitoring

HP NonStop Performance Essentials accumulates the performance status from individual NonStop and Linux systems and provides a single aggregated performance status indicator for each cluster (as defined in NonStop Cluster Essentials). This status is dynamically updated in real-time as the performance problems occur (or are corrected) on the individual systems. The major advantage of an aggregated cluster performance indicator is that the user does not have to drill-down to individual systems unless there is a problem or unless they need to perform a task concerned with configuration or control.

The System tab of a NonStop cluster display shows the aggregated performance status as well as individual performance status for each system in the cluster. Any system name can be clicked on to open a separate Performance Essentials page with drill-down to the display of that system.

Using the Performance Essentials page and Monitor tab, the user can display the current performance details of each NonStop or Linux system. This allows the user to monitor each entity and manage all alerts from one interface.

Figure 2: Performance Essentials page with drill-down of performance details

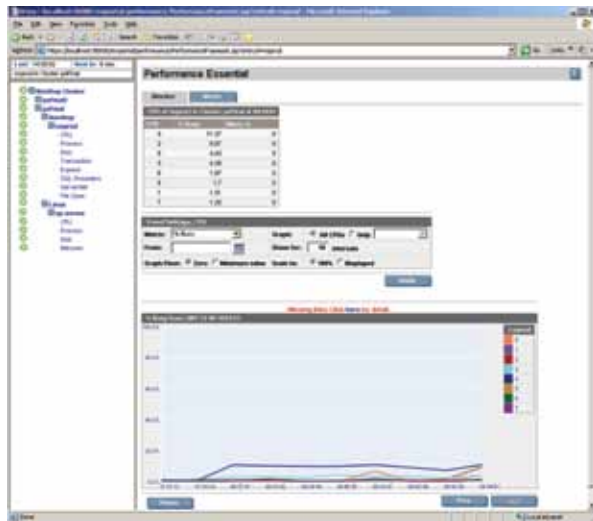
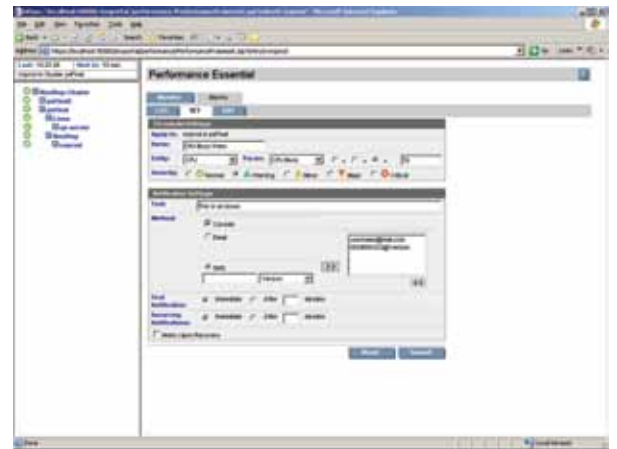


Figure 3: Integrated alert display



Integrated alert monitoring

The Monitor tab of the Performance Essentials page displays the aggregated alerts that have occurred on the individual systems in the cluster. These include the pre-defined alerts for CPU and process entities, and alerts defined by the user for the NonStop and Linux systems participating in the cluster.

The Alerts tab allows the user the capability to send e-mail and/or SMS messages when an alert threshold has been met. Any alert can be set, edited, and logged by the user.

HP NonStop Performance Essentials Technical specifications

| | |
|-------------------------------|--|
| NonStop Hardware | HP Integrity NonStop BladeSystem HP Integrity NonStop NS-Series server HP NonStop S-Series server |
| Linux Hardware | ProLiant DL (rack-mount) and BL (BladeSystem) servers |
| Windows Hardware (CMS) | Any CMS qualified to run HP SIM |
| NonStop Software | HP NonStop Operating System Release Version (RV) J06.03 or later HP NonStop Operating System RV H06.04 or later HP NonStop Operating System RV G06.24 or later |
| Linux Software | Linux Red Hat Enterprise Edition AS 4.4 or later |
| Windows Software | Microsoft® Windows Server 2003 with Service Pack 2 Microsoft Windows Server 2003 R2 Microsoft Windows 7 Enterprise Microsoft Windows XP Professional with Service Pack 2 HP Systems Insight Manager 6.2 or later HP NonStop Cluster Essentials 2.0 or later |

Ordering information

| Part number | Description |
|-------------|---|
| WNPE01V2 | HP NonStop Performance Essentials—Window SIM Client (Plug-in) |
| LNPE01V2 | HP NonStop Performance Essentials—Linux Host Agent |
| HNPE01V2 | HP NonStop Performance Essentials—NonStop Host Agent (H-series) |
| QNPE01V2 | HP NonStop Performance Essentials—NonStop Host Agent (J-series) |
| NPE01V2 | HP NonStop Performance Essentials—NonStop Host Agent (G-series) |

HP Financial Services

HP Financial Services provides innovative financing and financial asset management programs to help you cost-effectively acquire and manage your HP solutions. For more information about these services, contact your HP sales representative, or visit: www.hp.com/go/hpfinancialservices.

HP Services

Keep your IT organization competitive and ready to evolve as your business needs change. HP Services is designed to lower your IT costs, increase availability, reduce the complexity of multi-vendor services, and system implementation.

- Run your business smoothly as your IT adapts to changing business needs. The convenient pre-packaged HP Care Pack Service options and custom support solutions cover the entire IT solution lifecycle, to help you design, deploy, integrate, and manage an agile infrastructure.
<http://www.hp.com/support/services>
- Your environments will achieve the high levels of availability that your users demand when you utilize HP Mission Critical and Proactive Services.
<http://www.hp.com/services/missioncritical>
- Manage, enhance, and streamline your storage environments and reduce costs with the HP Storage Services Portfolio.
<http://www.hp.com/services/storage>
- Transform your data center with HP data center services that help you design and build an energy-efficient data center that will meet your needs today and tomorrow.
<http://www.hp.com/services/datacenter>

Capitalize on your IT environment capabilities with a partner who understands server, storage, and network technology in a multi-vendor environment. <http://www.hp.com/services>

To learn more about HP Manageability solutions for NonStop servers, contact your HP sales representative, or visit: www.hp.com/go/nonstop/operationsmanagement.



Get connected

www.hp.com/go/getconnected

Current HP driver, support, and security alerts delivered directly to your desktop

© Copyright 2009, 2011 Hewlett-Packard Development Company, L.P. The information contained herein is subject to change without notice. The only warranties for HP products and services are set forth in the express warranty statements accompanying such products and services. Nothing herein should be construed as constituting an additional warranty. HP shall not be liable for technical or editorial errors or omissions contained herein.

Microsoft and Windows are U.S. registered trademarks of Microsoft Corporation.

4AA2-5483ENW, Created April 2009; Updated October 2011, Rev. 2

