

# HPE Asset Manager Financial Management module

Improve asset investments to help drive business value



## Key benefits

- Reduce budget overruns through real-time access to data.
- Identify and communicate opportunities for cost reduction.
- Build effective controls for meeting regulatory compliance.
- Track costs from the business units down to cost categories.
- Streamline budget processes for future planning.
- Measure and communicate TCO of business services and understand the related assets.

## Operate IT like a business

IT executives are measured by their ability to deliver high-quality and cost-effective services. As IT technology differs only marginally from one company to the other, IT organizations find themselves in a position where they have to compete more on the basis of how effective they are, and not so much on how innovative their offering is.

With that in mind, organizations are going back to the basics—cost control, profitability, and productivity.

The focus then is on return on investment (ROI), total cost of ownership (TCO) and cost justification. The expectations for high-quality and consistent service delivery have not changed, but IT is now expected to pay special attention to the cost of delivering the business services. IT is now asked “to operate like a business.”

The HPE Asset Manager Financial Management module is the primary module within the HPE Asset Manager suite tasked to help you answer this need.

## Improve asset investments to drive business value

Many organizations have limited information about their assets. For example, you may know the purchase price of an asset, but the total cost of an asset involves more. Software installations, work orders, and maintenance operations are some of the associated costs that affect the overall financial productivity and life of an asset. An accurate view of asset performance enables management to better understand the appropriate allocation of assets and services. Furthermore, this visibility provides the information you need to make better decisions about when and how to invest for the future.

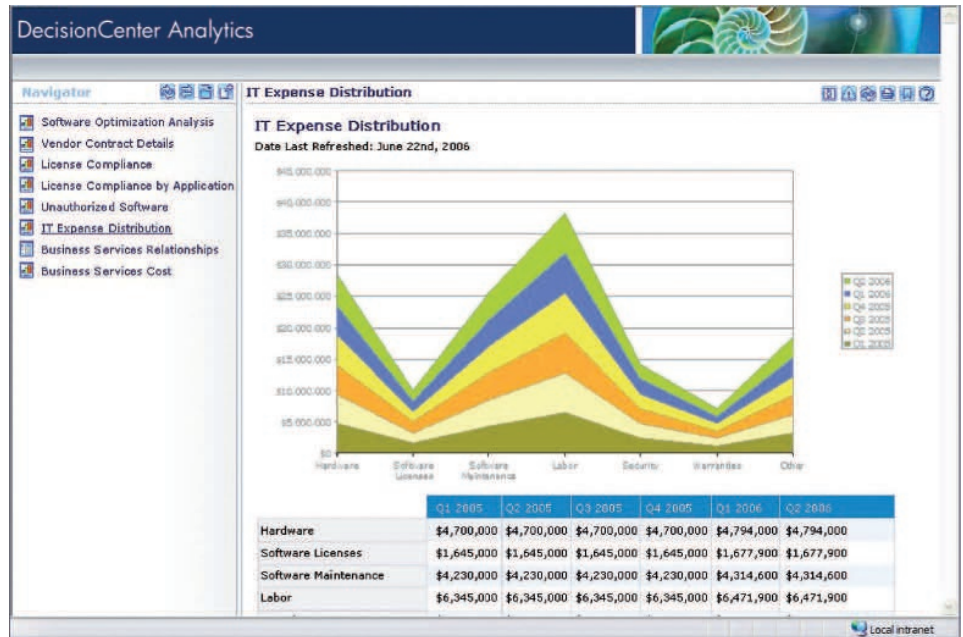


Figure 1. Use HPE Asset Manager Financial Management to measure key IT expenditures.

### Product overview

With HPE Asset Manager Financial Management, you have the information you need to evaluate assets in total and to determine which business services are most productive. This powerful HPE Asset Manager software module enables you to capture, monitor, and track all costs associated with assets—including acquisition costs, servicing, upgrades, and disposal costs—from the time assets are acquired to the time they are retired.

### Powerful features

#### Enable effective budget management.

Unlike many solutions that do not capture the complete financial picture, the HPE Asset Manager Financial Management module manages the full asset lifecycle. HPE Asset Manager Financial Management lets you define your own expense categories and track asset activity down to the category code for more granular information. This level of detail provides greater control and visibility. As a result, you get real-time information and can easily reconcile budgets with actual costs, helping you to keep assets and the associated services on track and in stride with your financial goals.

#### Track and attribute costs for business units.

Long-term operational planning requires an

understanding of how business units use assets and their associated services. HPE Asset Manager Financial Management lets you track and attribute asset expenditures to a specific cost center. Therefore, you can budget at a more detailed level and roll results back up to the parent relationship.

#### Enable IT and corporate compliance.

Legislation such as the Sarbanes-Oxley Act requires public companies to attest to the accuracy of the expenses they report. HPE Asset Manager Financial Management lets you report the depreciated book value of all IT assets at a deeper level of accuracy than enterprise resource planning (ERP) applications permit. While ERP applications look at categories or groupings of costs, financial management can review the actual value of each asset and roll up the values, providing a more accurate understanding of the financial position.

HPE Asset Manager Financial Management helps you determine which assets are most productive, where costs can be reduced, and how to best manage your assets on an ongoing basis.

#### Go beyond financial management.

Maintaining an up-to-date and accurate list of fixed assets can be difficult. HPE Asset Manager Financial Management lets you

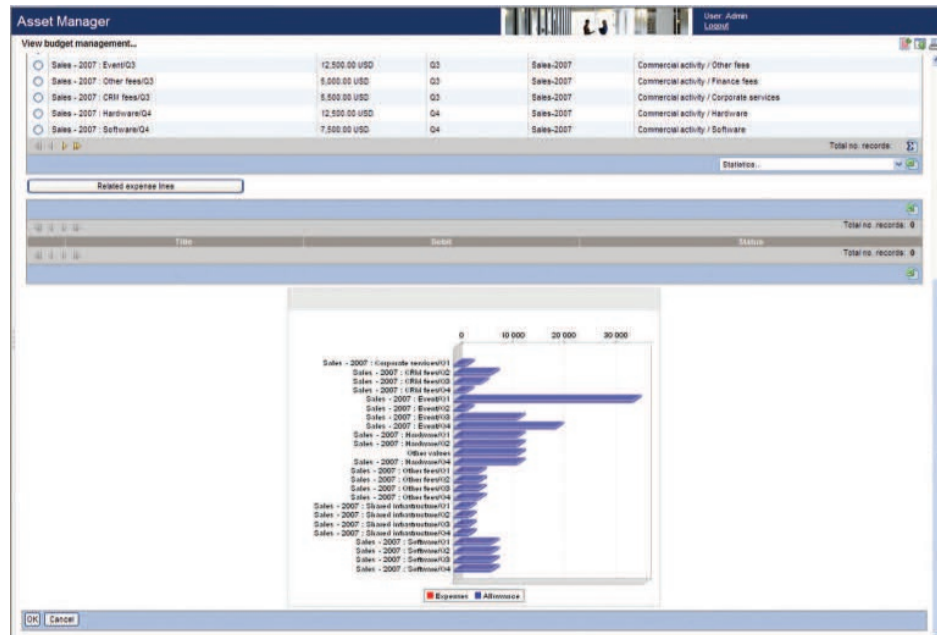


Figure 2. Measure costs by any category.

reconcile fixed assets and associate them with assets that actually exist in your portfolio. You can update the financial system to reflect appropriate information when inconsistencies are identified. This provides you with the information you need to reduce costs by associating an asset with related information, such as property taxes or insurance costs.

Once you establish an accurate picture of your fixed assets, you can calculate depreciation and determine residual value. The completeness of this information enables your managers to understand the accounting and financial impact of servicing and disposing of assets so they can identify opportunities for greater cost reductions and process improvements.

#### Strategically plan for the future.

Without an accurate view of the total cost of ownership, your organization may have difficulty assessing where to invest for the future. HPE Asset Manager Financial Management can track expenses through the entire asset lifecycle, enabling you to calculate a comprehensive and highly accurate cost of ownership.

HPE Asset Manager Financial Management also provides your managers with the ability to compare total ownership costs among similar assets, identify those that have fewer associated costs, and make important decisions about asset allocation, purchase,

or retirement. This information is critical to long-term strategic planning, improved purchasing decisions (including buy-versus-lease decisions) and more realistic budget projections.

#### Manage budgets more effectively.

All events that incur costs are stored as expense lines, including costs relating to assets, contracts, lease payments, work orders, maintenance operations, and consumption. You have the flexibility to create these expense lines manually or automatically. In addition, individual departments can manage their own budgets.

#### Enable comprehensive tax rate calculations.

Tax rates can be defined and easily associated with assets, providing you with the ability to calculate tax liability. HPE Asset Manager Financial Management enables you to create formulas and associate tax rates to product categories and locations for all purchases and rent calculations. In addition, the taxes linked to asset acquisitions appear in each stage of the procurement cycle.

#### Understand the value of assets as they depreciate.

HPE Asset Manager Financial Management allows you to calculate depreciation on fixed assets and view the residual value of physical assets. Departments that exchange assets can charge back the appropriate amounts, based on residual value.

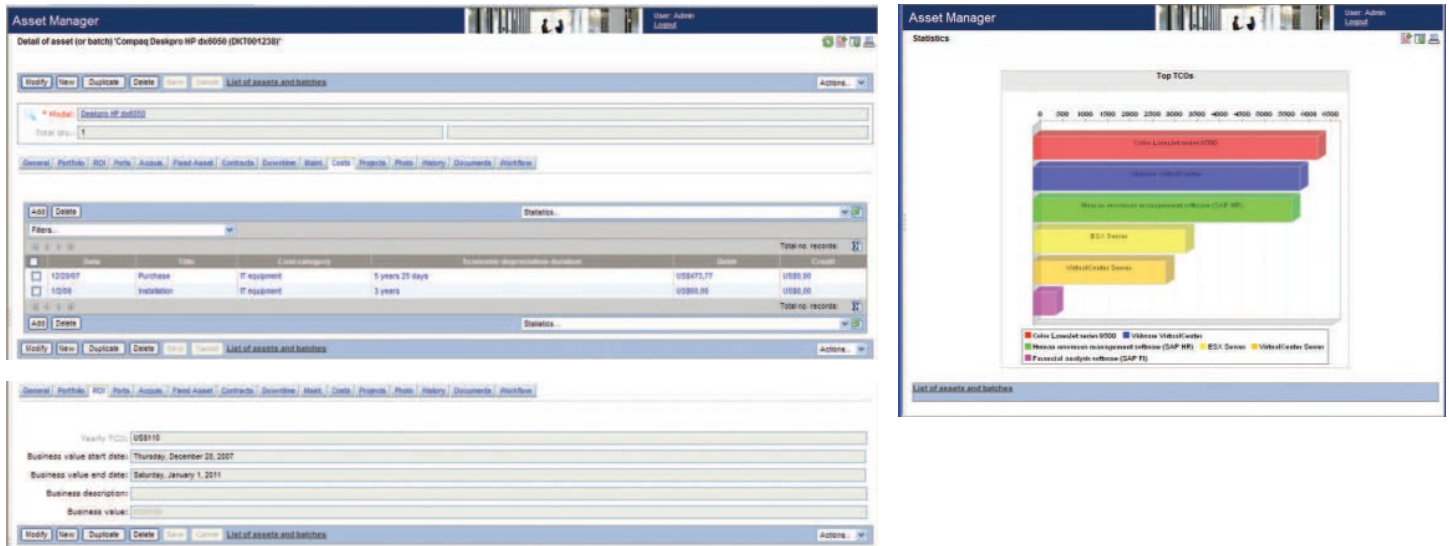


Figure 3. Calculate total cost of ownership (TCO) of all assets and asset classes.

**Gain multi-currency support.**

HPE Asset Manager Financial Management simplifies conversion from one currency to another. It allows you to define default currencies and exchange rates as well as to enter rates manually or automatically from external sources.

The HPE Asset Manager Financial Management module helps you determine which assets are most productive, where costs can be reduced, and how to best manage your assets on an ongoing basis.

**A complete solution**

**Comprehensive training**

HPE provides a comprehensive curriculum of HPE Software and IT Service Management courses. These offerings provide the training you need to realize the full potential of your HPE solutions, increase your network optimization and responsiveness, and achieve better return on your IT investments.

With more than 30 years of experience meeting complex education challenges worldwide, HPE knows training. This experience, coupled with unique insights into HPE Software products, positions HPE to deliver the optimum training experience. For more information about these and other educational courses, visit [hpe.com/services/education](http://hpe.com/services/education).

**The smartest way to invest in IT**

HPE Financial Services provides innovative financing and financial asset management programs to help you cost-effectively acquire, manage, and ultimately retire your HPE solutions. For more information on these services, contact your HPE sales representative or visit [hpe.com/solutions/hpefinancialservices](http://hpe.com/solutions/hpefinancialservices).

Learn more at [hpe.com/software/itam](http://hpe.com/software/itam)



Sign up for updates